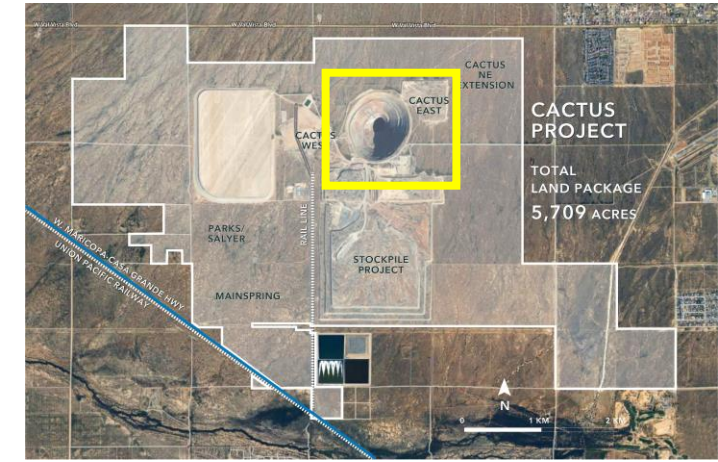
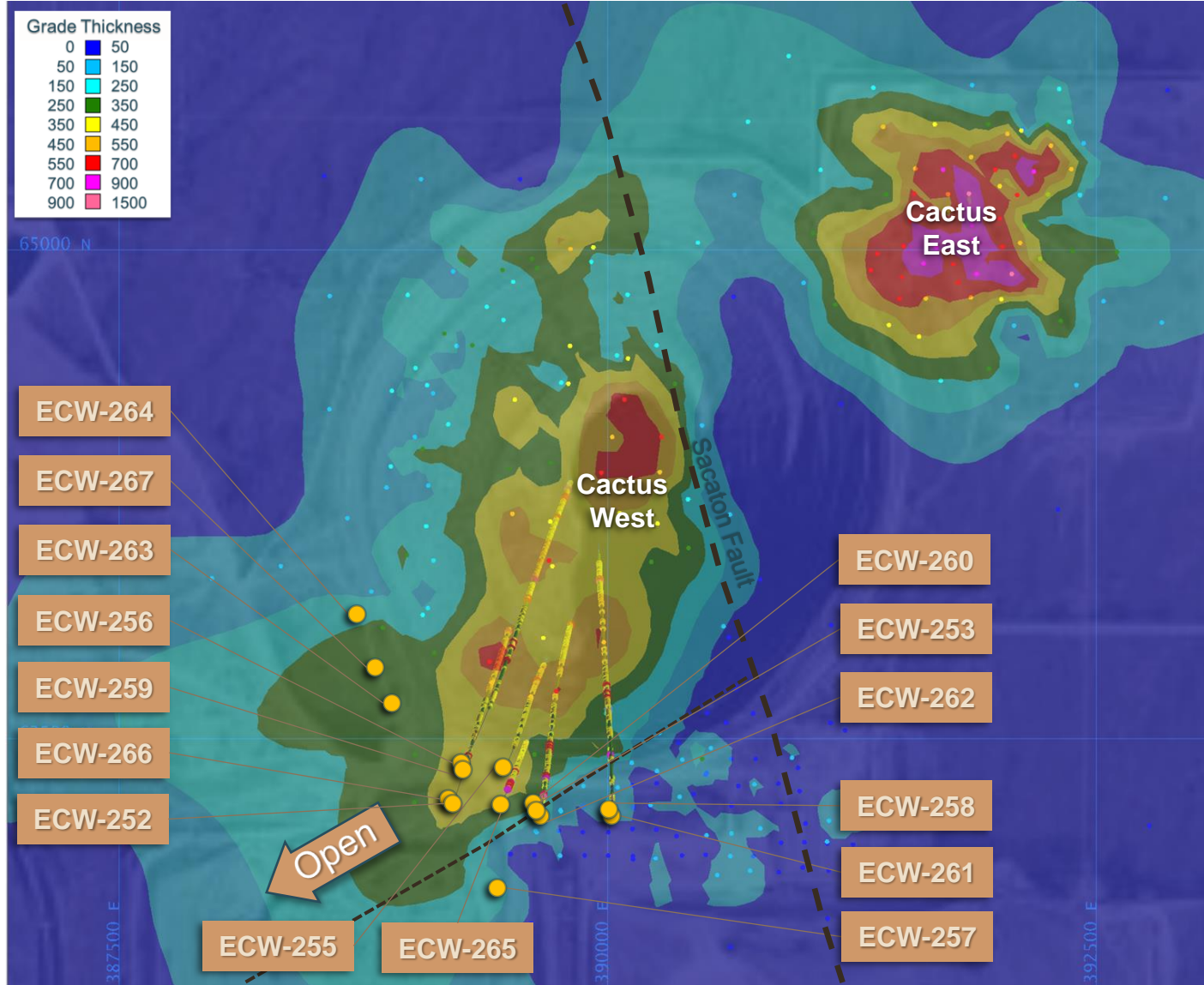
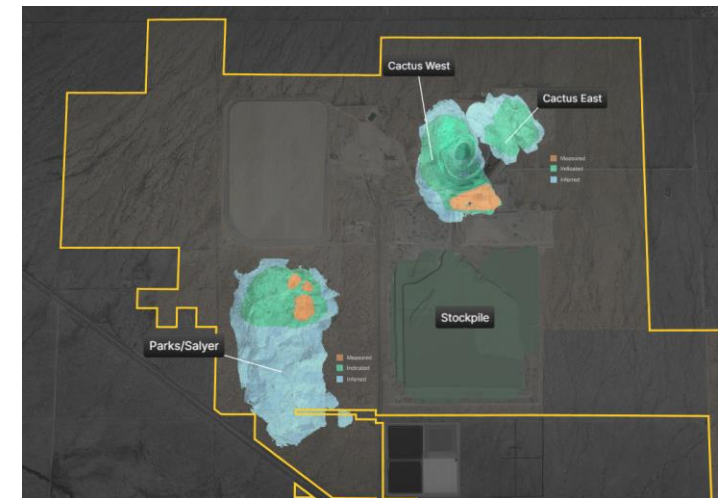


# Cactus West Plan View September 16, 2024



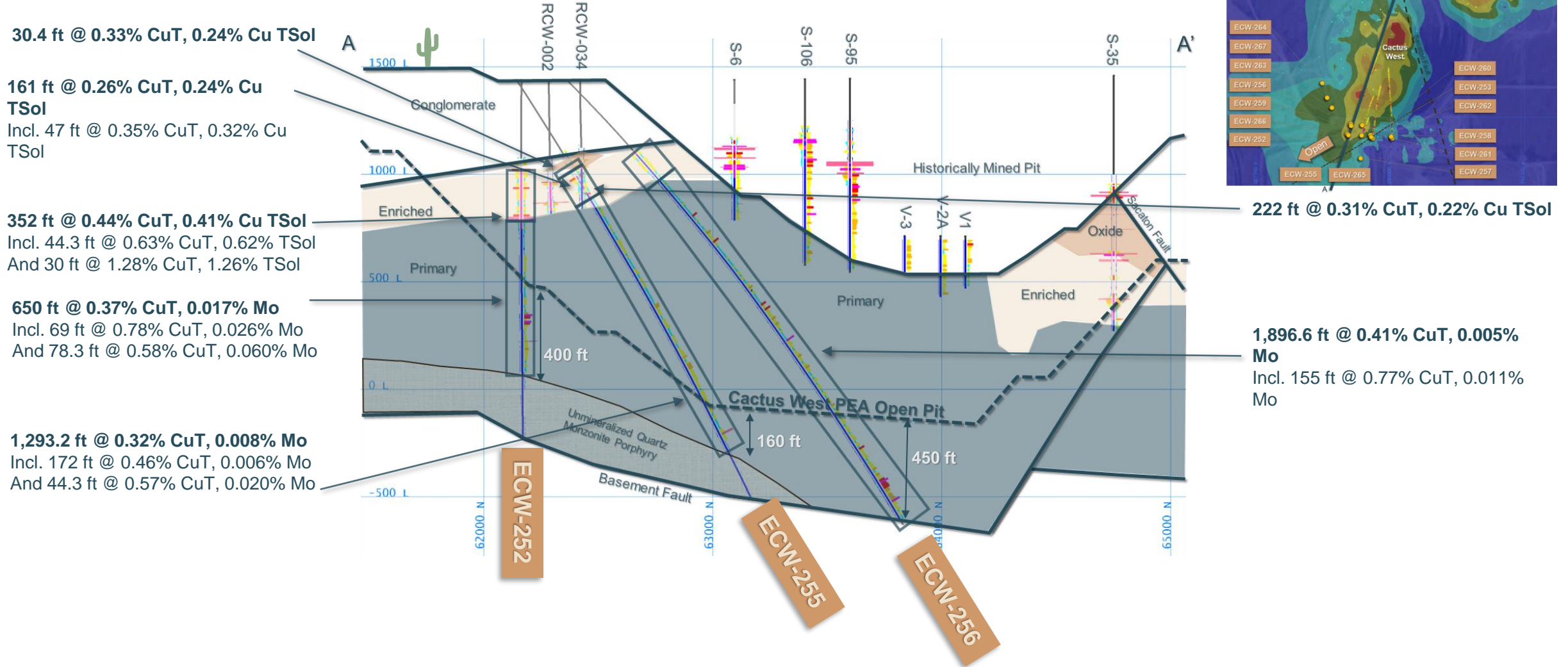
- September 16 Press Release
- Assays Pending
- Previously Released



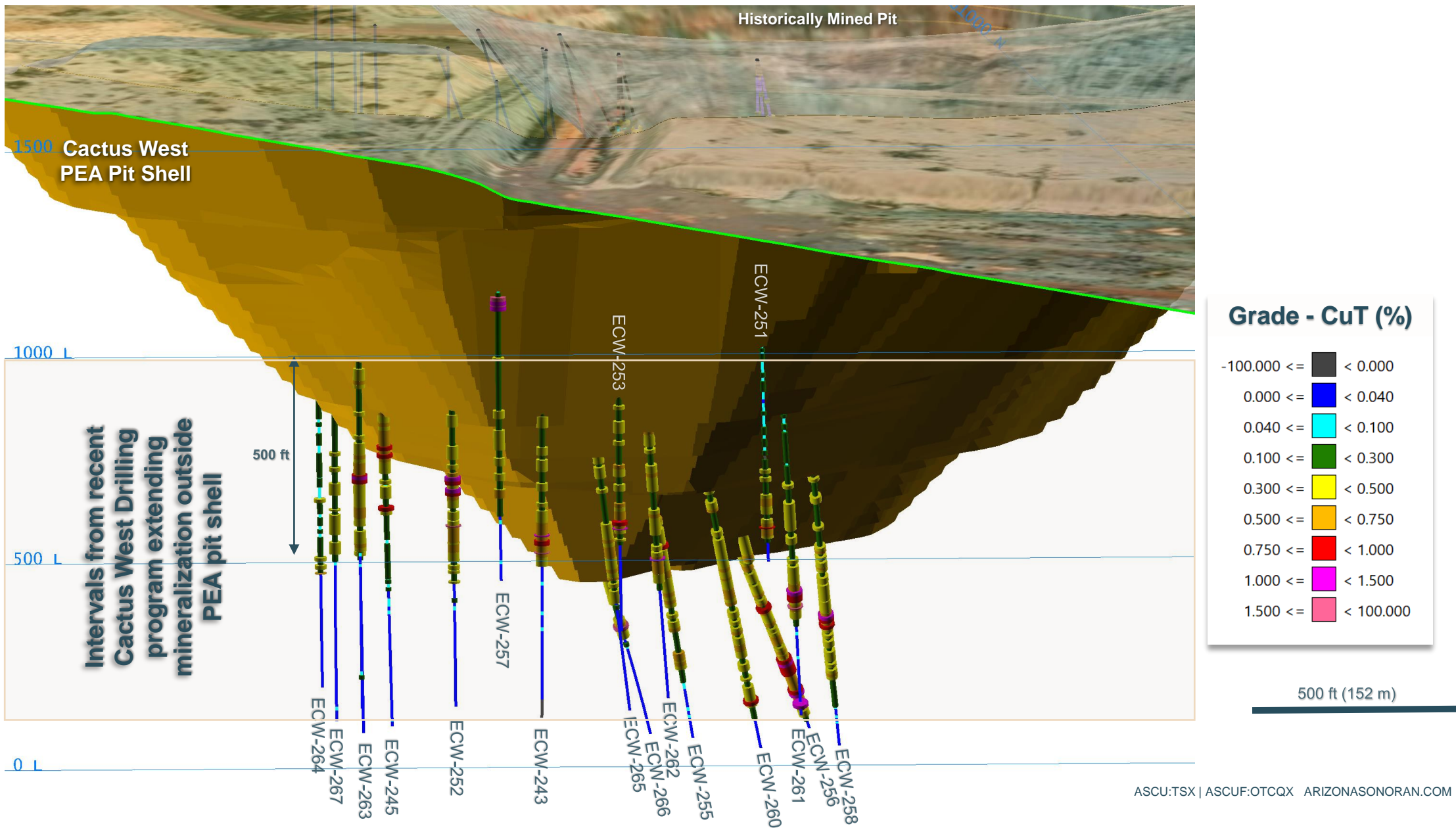
Grade Thickness = CuT % x Vertical Thickness (ft)

Grade thickness calculations include the entire assayed mineralization package down hole No grade cutoffs or grade capping has been applied

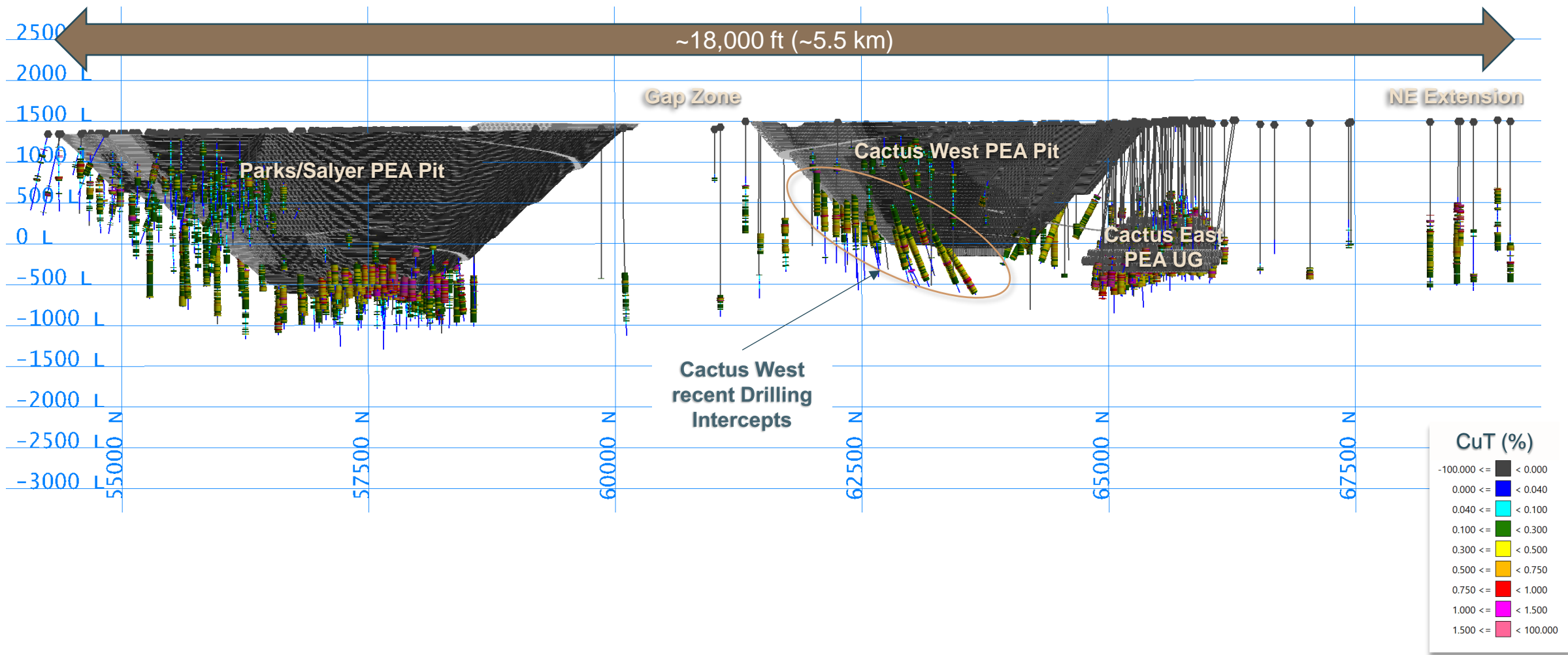
# Cactus West A-A' Cross Section September 16, 2024



# Oblique View Looking North at Cactus West September 16, 2024



# View Looking North West *September 16, 2024*



# ECW-252 Enriched: Disseminated and Veinlet Chalcocite in Mixed Breccia



**0.994% CuT**  
**0.990% TSol**  
**0.086% Mo**

**10.3 ft Interval**  
**411.7 ft – 422.0 ft**  
 (3.1 m, 125.5 m – 128.6 m)

Within:

0.44% CuT  
 0.41% TSol  
 0.014% Mo

352.0 ft interval  
 357.0 ft – 709.0 ft  
 (107.3 m, 108.8 m – 216.1 m)

# ECW-252 Primary: Disseminated Pyrite and Chalcopyrite in Fault Breccia



**1.171% CuT**  
**0.068% TSol**  
**0.017% Mo**

**10.0 ft Interval**  
**1,088.0 ft – 1,098.0 ft**  
 (3.0 m, 331.6 m – 334.7 m)

Within:  
 0.37% CuT  
 0.03% TSol  
 0.017% Mo

650.0 ft interval  
 709.0 ft – 1,359.0 ft  
 (198.1 m, 216.1 m – 414.2 m)

# ECW-255 Primary: Disseminated Pyrite and Chalcopyrite in Fault Breccia



**0.896% CuT**  
**0.062% TSol**  
**0.009% Mo**

**10.0 ft Interval**  
**1,466.0 ft – 1,476.0 ft**  
 (3.0 m, 446.8 m – 449.9 m)

Within:  
 0.32% CuT  
 0.031% TSol  
 0.008% Mo

1,293.2 ft interval  
 554.8 ft – 1,848.0 ft  
 (394.2 m, 169.1 m – 563.3 m)

# ECW-256 Primary: Disseminated and Veinlet Pyrite and Chalcopyrite in Mp



**1.256% CuT**  
**0.074% TSol**  
**0.003% Mo**

**9.0 ft Interval**  
**1,580.0 ft – 1,589.0 ft**  
 (2.7 m, 481.6 m – 484.3 m)

Within:  
 0.41% CuT  
 0.04% TSol  
 0.005% Mo

1,896.6 ft interval  
 675.4 ft – 2,572.0 ft  
 (578.1 m, 205.9 m – 783.9 m)



# ECW-258 Primary: Disseminated and Veinlet Pyrite and Chalcopyrite in Fault Bx



**1.395% CuT**  
**0.073% TSol**  
**0.006% Mo**

**10.0 ft Interval**  
**2,057.0 ft – 2,067.0 ft**  
**(3.0 m, 627.0 m – 630.0 m)**

Within:  
 0.31% CuT  
 0.03% TSol  
 0.005% Mo

**2,001.3 ft interval**  
**359.0 ft – 2,360.3 ft**  
**(610.0 m, 109.4 m – 719.4 m)**

# ECW-260 Primary: Disseminated Pyrite and Chalcopyrite in Brecciated Mp



**0.723% CuT**  
**0.048% TSol**  
**0.029% Mo**

**10.0 ft Interval**  
**1,907.0 ft – 1,917.0 ft**  
 (3.0 m, 581.3 m – 584.3 m)

Within:  
 0.33% CuT  
 0.03% TSol  
 0.009% Mo

1,695.6 ft interval  
 432.0 ft – 2,127.6 ft  
 (516.8 m, 131.7 m – 648.5 m)

# ECW-266 Primary: Disseminated and Vein Pyrite and Chalcopyrite in Fault Bx



**1.754% CuT**  
**0.082% TSol**  
**0.009% Mo**

**10.0 ft Interval**  
**1,896.0 ft – 1,906.0 ft**  
 (3.0 m, 577.9 m – 580.9 m)

Within:  
 0.36% CuT  
 0.03% TSol  
 0.009% Mo

1,309.3 ft interval  
 654.7 ft – 1,964.0 ft  
 (399.1 m, 199.6 m – 598.6 m)