

Challenger Gold Targets Production in Q2 2025 through Strategic Investment and Toll Milling

Company Provides Update on Activities and Future Plans

Highlights

- Executed binding term-sheet including a A\$6.6M Strategic Private Placement with existing shareholder that is expected to facilitate the processing of metals from the Hualilan project through a tolling agreement.
- Entering into toll a tolling agreement is expected to accelerate the Company's timeline to bring Hualilan into production and capitalise on record gold prices to generate early cash flow.
- This cashflow will be used to fund the larger Hualilan stand-alone development.
- 478,000t of ore containing 85,550 Oz (Au) and 495,334 oz (Ag) at a grade of 5.8 g/t Au, 32.2 g/t Ag identified for Toll Milling startup. *(79,044 Oz Au Indicated, 18,240 Oz Au Inferred and 448,861 Oz Ag Indicated, 88782 Oz Ag Inferred)*
- Toll Milling is regarded as a robust startup strategy given:
 - Ore to be Toll Milled starts at surface and is contained in a series low strip ratio open pits;
 - The toll milling agreement is expected to cover funding for mining, trucking and processing Hualilan ore until CEL receives first revenue from sales of gold; and
 - Tolling will focus on the oxide material better suited to treatment via the Toll Milling Plant.
- CEL has submitted an EIA application for approval to mine, the final approval required for Hualilan to be fully permitted for production via Toll Milling or stand-alone processing at Hualilan.
- The Company intends to undertake a Share purchase Plan, capped at \$1 million, to allow shareholders to invest at the proposed price of the Strategic Placement.

Challenger Gold (ASX: CEL) ("CEL" or the "**Company**") is pleased to announce that it has entered a Binding Term Sheet for:

- a private placement by Dolphin Real Assets Fund SPC Ltd. a part of the Elstain Group; and
- Toll Milling opportunity for Hualilan's ore (the "**Toll Milling Agreement**") that is also expected to provide funding for costs of mining, transporting, and processing until CEL receives revenue from initial gold sales

The Toll Milling Agreement would guarantee CEL a minimum of 450,000t of high-grade near surface Hualilan ore containing approximately 85,000 oz of gold and 495,000 oz silver (79,044 Oz Au Indicated, 18,240 Oz Au Inferred 448,861 Oz Ag Indicated, 88782 Oz Ag Inferred) over 3-years for processing. The execution and successful implementation of Toll Milling Agreement will be a transformational event for the Company.

The primary objective of this strategy is to capitalize on the current high gold price (above US\$2,500/oz) to generate early cash flow. This cashflow will be allocated towards the construction of the standalone Hualilan Gold project including a Flotation with Tails Leach ("**FTL**") circuit, a potential Heap Leach ("**HL**") pad at Hualilan, and open pit mining fleet.

CEL plans to release an interim desktop study focused on the Toll Milling startup. Following this the company intends to incorporate the results of the Toll Milling startup into the larger life-of-mine ("**LOM**") plan for Hualilan. This data will be included in the Pre-Feasibility Study.

CEL has submitted an EIA application for approval to mine, the final approval required for Hualilan to be fully permitted for production. The Company is currently preparing a separate EIA for the transport of Hualilan ore by road which will be the final permit required prior to the commencement of Toll Milling.

Closing is subject to completion of due diligence, execution of the Definitive Agreements, and necessary approvals under the ASX listing rules. Extensive due diligence to date includes:

- further metallurgical testing of Hualilan ore;
- detailed economic analysis on the tolling agreement terms undertaken by a leading San Juan mining/processing consultancy (final report pending); and
- design of Toll Milling pits.

CEL intends to apply for a listing on the TSX or such other recognized Canadian stock exchange as soon as practically possible following closing. In addition, the TSX listing will provide the catalyst for a process of board renewal with the Company to target 1-2 Canadian based Independent Directors that would likely replace existing CEL Directors.

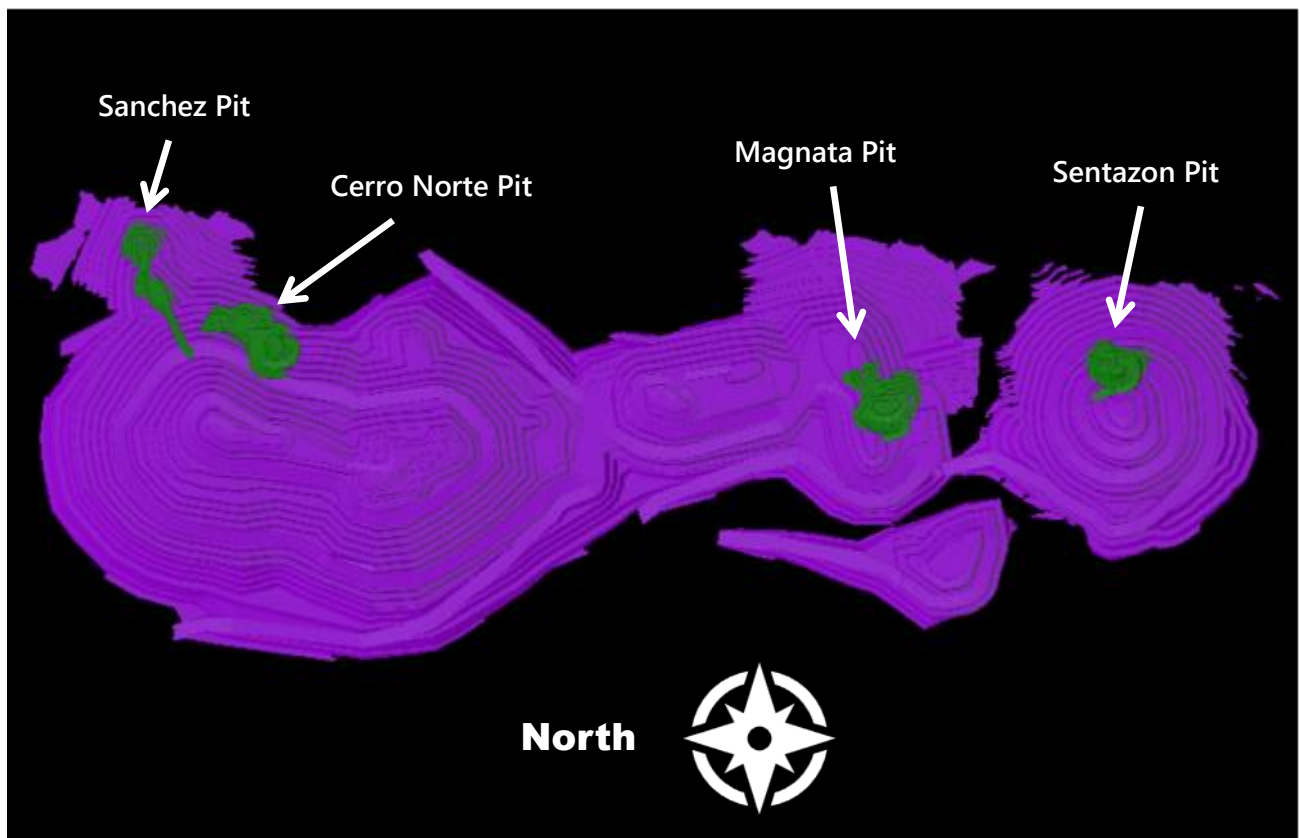
Toll Milling Mining Inventory

Mining Inventory

The Scoping Study reported open pit inventory of 1.4mt at 3.6 g/t Au, 23 g/t Ag in three pits, the North, Central, and South open pits. These pits had a combined strip ratio of 6 to 1. The company has completed a series of pit optimizations focused on Toll Milling which identified four low strip high-grade starter pits at Sanchez, Cerro Norte, Magnata and Sentazon suitable for Toll Milling (Figure 1).

Open pit designs have been completed for these pits generating Potential Mining Inventory (PMI) for Toll Milling of 478,000t which starts at surface (Table 1). The average grade of this Toll Milling Inventory is 5.8 g/t Au, 32.2 g/t Ag containing 85,550 Oz (Au) and 495,334 oz (Ag) (79,044 Oz Au Indicated, 18,240 Oz Au Inferred and 448,861 Oz Ag Indicated, 88782 Oz Ag Inferred) . This represents 3% of the total Hualilan mineral resource of 2.8Moz AuEq¹.

Figure 1 - Location of Toll Milling pits within PFS base case Open Pit



The Hualilan PMI intended to be treated via Toll Milling is predominantly oxide material which is better suited to treatment via the Toll Milling Plant rather than the flotation plant planned in the larger stand-alone Hualilan development.

Table 1 - Toll Milling open pit design (Toll Milling Inventory)

Potential Mineral Inventory	Material (t)	Au (g/t)	Ag (g/t)	Au Contained (oz)	Ag Contained (oz)	Strip Ratio (PMI vs. SP + Waste)
Sanchez Pit - Indicated	93,655.91	6.92	11.81	20839.19	35565.15	2.2
Sanchez Pit - Inferred	1,175.01	3.42	4.99	129.21	188.53	2.2
Norte Pit - Indicated	98,873.64	8.14	48.37	25878.82	153778.71	3.5
Norte Pit - Inferred	46,371.46	3.80	14.78	5665.97	22037.63	3.5
Magnata Pit – Indicated	153,363.51	4.65	42.82	22930.56	211158.38	4.2
Magnata Pit - Inferred	24,133.59	3.93	23.45	3049.68	18197.19	4.2
Sentazon Pit -Indicated	53,030.53	5.51	28.36	9395.44	48358.39	6.6
Sentazon Pit - Inferred	7,821.85	2.65	24.29	20839.19	35565.15	6.6
Total Indicated category	398,923.59	6.16	34.99	79,044.01	448,860.63	3.9
Total Inferred category	124,710.59	4.55	22.14	18,240.30	88,781.74	3.9
Total PMI – Toll Treated	478,426	5.76	32.20	88,550	495,334	3.9
Total PMI - Stockpiled	387,064	1.33	11.71	16,606	145,721	
Waste	1,480,359					
Total Material Moved	2,345,849					

Note waste includes the following lower grade mineralisation that will be stockpiled at Hualilan for later processing in the stand-alone Hualilan plant:

- 148,531t Heap Leach material (0.3 g/t Au, 4.7 g/t Ag)
- 238,533t Flotation material (2.0 g/t Au, 16.1 g/t Ag)

TSX Listing and Board Renewal

The Company intends to list on the TSX. The Company has completed the required 43-101 reports for both Hualilan and El Guayabo and anticipates that these will be lodged with the TSX during the month. The Company Board has completed the relevant background checks required by the TSX. The Company held the TSX listing back as it was advised that the strategy go to market following production via Toll Milling combined with a funding package would facilitate a stronger Initial response from North American Investors.

The TSX listing will provide the catalyst for a process of board renewal with the Company to target 1-2 Canadian based independent Directors that would likely replace existing CEL Directors.

The Board intends to appoint a CFO, who would be Involved In the Toll Milling, the regulatory matters associated with gold and silver export from Argentina and the TSX listing.

Supporting Metallurgical Testwork

CEL Leach testwork

During and subsequent to the Scoping Study the Company has undertaken an extensive body of metallurgical testwork that validates the economic recovery of gold and silver in the toll treatment plant. This includes testing on a composite designed to be representative of the higher-grade (predominantly skarn) mineralisation in the Scoping Study mine plan which is representative of the proposed Toll Milling mineralisation.

The results of this test work, indicate gold recoveries of 83-84% and silver recoveries up to 68.5% from a combination of gravity and cyanide leach in the high-grade skarn mineralisation (Table 2).

The Company has commenced a series of leach testwork designed to mirror the flow sheet in the Toll Treatment plant on a series of different grade composites designed to be representative of the start-up mineralisation. Results from this series of metallurgical testwork are pending.

Table 2 - Summary CEL gravity/cyanide leach Metallurgical testwork

Test	Sample ID	Mass g, ml	Grade (g/t, mg/l)		Distribution (%)	
			Au	Ag	Au	Ag
75 micron (72 hour)	Gravity Conc	15.3	224	662	30.2	10.4
	Leach Liquor	2484	2.32	0.48	53.1	2.6
	Leach Residue	1961	0.97	43.0	16.8	86.9
	Recovery				83.2	13.1
	Head (calc)	1976	5.74	49.1	100.0	100
	Head (direct)		5.20	47.6		
109 micron (72 hour)	Gravity Conc	14.4	174	643	23.2	9.7
	Leach Liquor	2461	2.55	22.0	60.8	58.8
	Leach Residue	1959	0.88	15.4	16.0	31.5
	Recovery				84.0	68.5
	Head	1973	5.47	48.5	100.0	100
	Head (direct)		5.20	47.6		
154 micron (72 hour)	Gravity Conc	8.7	217	820	16.6	7.1
	Leach Liquor	2442	2.77	22.6	62.0	57.4
	Leach Residue	1985	1.23	17.9	21.4	35.5
	Recovery				78.6	64.5
	Head	1994	5.71	50.2	100.0	100
	Head (direct)		5.20	47.6		

Metallurgical testwork undertaken by the Toll Milling Plant owner

The Toll Treatment plant owner undertook a series of independent metallurgical testwork using three 50kg bulk samples taken from Cerro Norte/Sanchez area.

The RDJ sample, located within the proposed Norte starter pit, and the CHM and UG samples located further south in the main Cerro Norte Manto. The assay results of the three bulk samples are shown in Table 3.

Cyanide Leach tests were undertaken on each of the three samples at a grind of 75 microns (P_{80} of 75 μ) and 106 microns (P_{80} of 106 μ) at a Cyanide concentration of 2.5 g/l. The Gold and silver recoveries from these test are outlined in Table 4. The RDJ and UG samples returned average recoveries of 94% (RDJ) and 91% (UG) for gold and 79% (RDJ) and 67% (UG) for silver.

These samples are considered representative of the oxide material on the Sanchez and Dona Justa starter pits. The CHM sample returned lower average recoveries of 66% (Au) and 78% (Ag). This bulk sample was from the Main Cerro Norte Manto which is not captured in the two Cerro Norte starter pits.

Table 3 - Composite samples taken by Toll Milling Plant operator for metallurgical testing

SAMPLE	Au (g/t)	Ag (g/t)	Pb (%)	Zn (%)	As (ppm)
RDJ	4.4	66.7	0.08%	>1%	92
CHM	8.5	108.6	>1%	>1%	1028
ESC-UG	4.6	62.4	0.77%	>1%	52

Table 4 - - Summary cyanide leach testwork on Hualilan material undertaken by the Toll Mill owner

Sample/Test	Leach Time (hours)	Au Recovery (%)	Ag Recovery (%)
RDJ 106 micron grind	24	90.1%	82.1%
	48	95.9%	81.2%
RDJ 106 micron grind	24	91.9%	76.4%
	48	95.4%	78.5%
RDJ 74 micron grind	24	95.1%	78.0%
	48	96.6%	80.1%
UG 106 micron grind	24	89.5%	63.5%
	48	90.9%	67.6%
UG0 74 micron grind	24	89.7%	67.0%
	48	92.0%	69.0%
CHM 106 micron grind	24	65.0%	77.5%
	48	66.4%	77.0%
CHM 106 micron grind	24	65.5%	75.0%
	48	67.8%	77.0%
CHM 76 micron grind	24	65.2%	78.0%
	48	67.0%	82.0%
Average	24	81.5%	74.7%
	28	84.0%	76.6%

Next Steps

The milestones prior to the commencement of Toll Milling are:

- Initial Diligence report on the Toll treatment plant and the viability of the restart - Status 2 day site visit completed final report pending.
- Receipt of metallurgical testwork undertaken to mirror the Toll Treatment plant flow sheet - Status results pending.
- Execution of the Toll Treatment Agreement, anticipated in 45 days.
- Completion of Private Placement by Dolphin Real Assets Fund SPC Ltd , with the execution of the Subscription Agreement and Investor Rights Agreement, anticipated in 45 days.
- Completion of final mine design and schedule for the startup/toll treatment open pits - status pending.
- Detailed discussions with local mining contractors receipt of final contract mining quotes- following delivery of final startup mine plan and schedule.
- Generation owner operated mining cost model using available rental equipment.
- Ausenco Toll Treatment plant audit and generation processing costs - status start pending receipt of local engineering report.

KEY TERMS OF THE AGREEMENT

The key commercial terms of the Binding Term Sheet are outlined below.

PRIVATE PLACEMENT

On the Closing Date the Purchaser will acquire from the Company 147,726,678 ordinary shares in the capital of the Company (each, a "Share") each share with an attached ordinary share purchase warrant of the Company.

The placement price will be equal to the lesser of:

- i) the market price as of the close of market prior to the date hereof, that is to say, AUD\$ 0.045; and
- ii) the volume-weighted average price of the Shares of Challenger during the thirty days prior to the Closing Date.

The share purchase warrants will have a period of two (2) years from the Closing Date at a strike price equivalent to the Placement Price plus 10% during the first 12 months then the Placement Price plus 20% after 12 months.

The warrants may not be exercised to the extent that the issue of the underlying CEL's shares would cause the Purchaser (alone or together with any affiliates and/or any other person with whom the Purchaser may have an agreement or arrangement providing voting power) to exceed voting power in excess of 19.99% in CEL unless CEL shareholders resolve to approve the issue in accordance with section 611 item 7 of the Corporations Act or another exception contained in section 611 of the

Corporations Act from the prohibitions in section 606 of the Corporations Act is available and applies to the issue. The Purchaser acknowledges that CEL is not proposing to seek shareholder approval under item 7 of section 611 of the Corporations Act to allow the Purchaser to exceed 19.99% voting power.

TOLL TREATMENT

The treatment of Hualilan ore will be governed by a Toll Treatment Agreement. The Toll Treatment Agreement will contain mutually agreeable and customary terms and conditions for a transaction of this nature, including, but not limited to the following key commercial terms:

Minimum Tonnage: guaranteed toll treatment capacity available the CEL of 450,000t (over 3 years).

Minimum throughput: guaranteed toll treatment of 150,000t annually.

Type of Processing: The Toll Milling agreement contemplates processing via campaign milling however, based on the studies and reports, the Technical Committee of both parties may determine to combine the process of gold and silver materials from Hualilan and the Plant at the same time, if the conclusion is that that is the most efficient way to operate

Title to ore and subsequent minerals: title to the Ore delivered by CEL, and gold or silver derived from such Ore, will remain with CEL at all times. CEL will be the exporting party for gold and silver produced from Hualilan material-

Payment for gold sales: CEL's sale proceeds will be based on the gold and silver dore produced during the processing each parcel that is campaigned plus a gold in circuit (GIC) correction.

Sale proceeds: CEL's sale proceeds will be received by them being credited in US\$ into its own Mint account by the purchasing mint.

Force Majeure: The agreement will include typical Force Majeure clauses in favor of both parties for an agreement of this type

Termination: The agreement will include typical Termination clauses in favor of both parties for an agreement of this type.

This ASX release was approved by the Managing Director

For further information contact:

Kris Knauer
Managing Director
+61 411 885 979

kris.knauer@challengerex.com

Sergio Rotondo
Chairman
+1 646 462 9273

sergio.rotondo@challengerex.com

Media Enquiries

Jane Morgan
+ 61 405 555 618

jm@janemorganmanagement.com.au

Previous announcements referred to in this release include:

The Mineral Resource Estimate for the Hualilan Gold Project was first announced to the ASX on 1 June 2022 and updated 29 March 2023. The Mineral Resource Estimate for the El Guayabo Project was first announced to the ASX on 14 June 2023. The Company confirms it is not aware of any information or assumptions that materially impacts the information included in that announcement and that the material assumptions and technical parameters underpinning the Mineral Resource Estimate continue to apply and have not materially changed.

ADDITIONAL INFORMATION**COMPETENT PERSON STATEMENT – EXPLORATION RESULTS AND MINERAL RESOURCES**

The information that relates to sampling techniques and data, exploration results, geological interpretation and Mineral Resource Estimate has been compiled Dr Stuart Munroe, BSc (Hons), PhD (Structural Geology), GDip (AppFin&Inv) who is a full-time employee of the Company. Dr Munroe is a Member of the AusIMM. Dr Munroe has over 20 years experience in the mining and metals industry and qualifies as a Competent Person as defined in the JORC Code (2012).

Dr Munroe has sufficient experience of relevance to the styles of mineralisation and the types of deposits under consideration, and to the activities undertaken, to qualify as a Competent Person as defined in the 2012 Edition of the Joint Ore Reserves Committee (JORC) Australasian Code for Reporting of Exploration Results and Mineral Resources. Dr Munroe consents to the inclusion in this report of the matters based on information in the form and context in which it appears. The Australian Securities Exchange has not reviewed and does not accept responsibility for the accuracy or adequacy of this release.

FORWARD LOOKING STATEMENTS

The announcement may contain certain forward-looking statements. Words 'anticipate', 'believe', 'expect', 'forecast', 'estimate', 'likely', 'intend', 'should', 'could', 'may', 'target', 'plan', 'potential' and other similar expressions are intended to identify forward-looking statements. Indication of, and guidance on, future costings, earnings and financial position and performance are also forward-looking statements.

Such forward looking statements are not guarantees of future performance, and involve known and unknown risks, uncertainties and other factors, many of which are beyond the control of Challenger Gold Ltd, its officers, employees, agents and associates, which may cause actual results to differ materially from those expressed or implied in such forward-looking statements. Actual results, performance, or outcomes may differ materially from any projections or forward-looking statements or the assumptions on which those statements are based.

You should not place any undue reliance on forward-looking statements and neither. Challenger nor its directors, officers, employees, servants or agents assume any responsibility to update such information. The stated Production Targets are based on the Company's current expectations of future results or events and should not be relied upon by investors when making investment decisions. Further evaluation work and appropriate studies are required to establish sufficient confidence that this target will be met.

Financial numbers, unless stated as final, are provisional and subject to change when final grades, weight and pricing are agreed under the terms of the offtake agreement. Figures in this announcement may not sum due to rounding.

The Company confirms that it is not aware of any new information or data that materially affects the information included in the original market announcements and that all material assumptions and technical parameters underpinning the estimates in the relevant original market announcements continue to apply and have not materially changed. The Company confirms that the form and context in which the Competent Person's findings are presented have not been materially modified from the original market announcements.

HUALILAN GOLD PROJECT MRE AND SCOPING STUDY

All references to the Scoping Study and its outcomes in this announcement relate to the ASX Announcement of 8 November 2023 'Hualilan Gold Project Scoping Study'. Please refer to that announcement for full details and supporting documentation.

Table 3: Hualilan Hold Project Mineral Resource Estimate (March 2023)

Domain	Category	Mt	Au (g/t)	Ag (g/t)	Zn (%)	Pb (%)	AuEq (g/t)	AuEq (Mozs)
US\$1800 optimised shell > 0.30 ppm AuEq	Indicated	45.5	1.0	5.1	0.38	0.06	1.3	1.9
	Inferred	9.6	1.1	7.3	0.43	0.06	1.4	0.44
Below US\$1800 shell >1.0ppm AuEq	Indicated	2.7	2.0	9.0	0.89	0.05	2.5	0.22
	Inferred	2.8	2.1	12.4	1.1	0.07	2.8	0.24
Total		60.6	1.1	6.0	0.4	0.06	1.4	2.8

Note: Some rounding errors may be present

¹ Gold Equivalent (AuEq) values - Requirements under the JORC Code

- Assumed commodity prices for the calculation of AuEq is Au US\$1900 Oz, Ag US\$24 Oz, Zn US\$4,000/t, Pb US\$2000/t
- Metallurgical recoveries are estimated to be Au (95%), Ag (91%), Zn (67%) Pb (58%) across all ore types (see *JORC Table 1 Section 3 Metallurgical assumptions*) based on metallurgical test work.
- The formula used: $AuEq (g/t) = Au (g/t) + [Ag (g/t) \times 0.012106] + [Zn (\%) \times 0.46204] + [Pb (\%) \times 0.19961]$
- CEL confirms that it is the Company's opinion that all the elements included in the metal equivalents calculation have a reasonable potential to be recovered and sold.

JORC Code, 2012 Edition – Table 1 report template

Section 1 Sampling Techniques and Data -Hualilan Project

(Criteria in this section apply to all succeeding sections.)

Criteria	JORC Code explanation	Commentary
Sampling techniques	<ul style="list-style-type: none"> - <i>Nature and quality of sampling (eg cut channels, random chips, or specific specialised industry standard measurement tools appropriate to the minerals under investigation, such as down hole gamma sondes, or handheld XRF instruments, etc). These examples should not be taken as limiting the broad meaning of sampling.</i> - <i>Include reference to measures taken to ensure sample representivity and the appropriate calibration of any measurement tools or systems used.</i> - <i>Aspects of the determination of mineralisation that are Material to the Public Report.</i> - <i>In cases where ‘industry standard’ work has been done this would be relatively simple (eg ‘reverse circulation drilling was used to obtain 1 m samples from which 3 kg was pulverised to produce a 30 g charge for fire assay’). In other cases, more explanation may be required, such as where there is coarse gold that has inherent sampling problems. Unusual commodities or mineralisation types (eg submarine nodules) may warrant disclosure of detailed information.</i> 	<p>Diamond core (HQ3 and NQ3) was cut longitudinally on site using a diamond saw or split using a hand operated hydraulic core sampling splitter. Samples lengths are generally from 0.5m to 2.0m in length (average 1.74m). Sample lengths are selected according to lithology, alteration, and mineralization contacts.</p> <p>For reverse circulation (RC) drilling, 2-4 kg sub-samples from each 1m drilled were collected from a face sample recovery cyclone mounted on the drill machine.</p> <p>Channel samples are cut into underground or surface outcrop using a hand-held diamond edged cutting tool. Parallel saw cuts 3-5cm apart are cut 2-4cm deep into the rock which allows for the extraction of a representative sample using a hammer and chisel. The sample is collected onto a plastic mat and collected into a sample bag.</p> <p>Core, RC and channel samples were crushed to approximately 85% passing 2mm. A 500g or a 1 kg sub-sample was taken and pulverized to 85% passing 75µm. A 50g charge was analysed for Au by fire assay with AA determination. Where the fire assay grade is > 10 g/t gold, a 50g charge was analysed for Au by Fire assay with gravimetric determination.</p> <p>A 10g charge was analysed for at least 48 elements by 4-acid digest and ICP-MS determination. Elements determined include Ag, As, Ba, Be, Bi, Ca, Ce, Co, Cr, Cs, Cu, Fe, Ga, Ge, Hf, In, K, La, Li, Mg, Mn, Mo, Na, Nb, Ni, P, Pb, Rb, Re, S, Sb Sc, Se, Sn, Sr, Ta, Te, Th, Ti, Tl, U, V, W, Y, Zn and Zr. For Ag > 100 g/t, Zn, Pb and Cu > 10,000 ppm and S > 10%, overlimit analysis was done by the same method using a different calibration.</p> <p>Unused pulps are returned from the laboratory to the Project and stored in a secure location, so they are available for any further analyses. Remaining drill core is stored undercover for future use if required.</p> <p>Visible gold observed has been observed in only 1 drill core sample only. Coarse gold is not likely to result in sample bias.</p> <p>Historic Data: There is little information provided by previous explorers to detail sampling techniques. Selected drill core was cut with a diamond saw longitudinally and one half submitted for assay. Assay was generally done for Au. In some drill campaigns, Ag and Zn were also analysed. There is limited multielement data available. No information is available for RC drill techniques and sampling.</p>

Challenger Gold Limited
ACN 123 591 382
ASX: **CEL**

Issued Capital
1,393.8m shares
126.7m options (\$0.14)
68.1m perf rights

Australian Registered Office
Level 1
100 Havelock Street
West Perth WA 6005

Directors
Mr Kris Knauer, MD and CEO
Mr Sergio Rotondo, Chairman
Dr Sonia Delgado, Exec. Director
Mr Fletcher Quinn, Non-Exec. Director
Mr Pini Althaus, Non Exec Director
Mr Brett Hackett Non Exec Director

Contact
T: +61 8 6385 2743
E: admin@challengergold.com

Criteria	JORC Code explanation	Commentary
Drilling techniques	<ul style="list-style-type: none"> - <i>Drill type (eg core, reverse circulation, open-hole hammer, rotary air blast, auger, Bangka, sonic, etc) and details (eg core diameter, triple or standard tube, depth of diamond tails, face-sampling bit or other type, whether core is oriented and if so, by what method, etc).</i> 	<p>CEL drilling of HQ3 core (triple tube) was done using various truck and track mounted drill machines that are operated by various drilling contractors based in Mendoza and San Juan. The core has not been oriented as the rock is commonly too broken to allow accurate core orientation.</p> <p>CEL drilling of reverse circulation (RC) drill holes was done using a track-mounted LM650 universal drill rig set up for reverse circulation drilling. Drilling was done using a 5.25 inch hammer bit.</p> <p>Collar details for historic drill holes, DD drill holes, RC drill holes completed by CEL that are used in the resource estimate are detailed in CEL ASX releases: 1 June 2022 (Maiden MRE): https://announcements.asx.com.au/asxpdf/20220601/pdf/459jfk8g7x2mt.pdf and 29 March 2023 (MRE update): https://announcements.asx.com.au/asxpdf/20230329/pdf/45n49jlm02grm1.pdf</p> <p>Collar locations for drill holes are surveyed using DGPS. Three DD holes and 3 RC holes have hand-held GPS collar surveys.</p> <p>Historic Data: Historic drill hole data is archival, data cross checked with drill logs and available plans and sections where available. Collar locations have been checked by CEL using differential GPS (DGPS) to verify if the site coincides with a marked collar, tagged drill site or likely drill pad location. In most cases the drill collars coincide with historic drill site, some of which (but not all) are tagged. The collar check surveys were reported in POSGAR (2007) projection and converted to WGS84.</p>
Drill sample recovery	<ul style="list-style-type: none"> - <i>Method of recording and assessing core and chip sample recoveries and results assessed.</i> - <i>Measures taken to maximise sample recovery and ensure representative nature of the samples.</i> - <i>Whether a relationship exists between sample recovery and grade and whether sample bias may have occurred due to preferential loss/gain of fine/coarse material.</i> 	<p>Drill core is placed into wooden boxes by the drillers and depth marks are indicated on wooden blocks at the end of each run. These depths are reconciled by CEL geologists when measuring core recovery and assessing core loss. Triple tube drilling has been being done by CEL to maximise core recovery.</p> <ul style="list-style-type: none"> - 761 CEL diamond drill holes completed have been used for the CEL resource estimate. Some of these holes are located outside the resource area. Total drilled is 224,180.60 metres, including cover drilled of 22,041.30 metres (9.8 %). Of the remaining 202,139.30 metres of bedrock drilled, core recovery is 96.8%. <p>RC sub-samples are collected from a rotary splitter mounted to the face sample recovery cyclone. A 2-4 kg sub-samples is collected for each metre of RC drilling. Duplicate samples are taken at the rate of 1 every 25-30 samples using a riffle splitter to split out a 2-4 kg sub-sample. The whole sample recovered is weighed to measure sample recovery and consistency in sampling.</p> <ul style="list-style-type: none"> - 37 CEL RC drill holes have been used in the CEL resource estimate. Total metres drilled is 2,923m. Cover drilled is 511 m (17.5%) <p>Channel samples have been weighed to ensure a consistency between sample lengths and weights. The channel samples are collected from saw-cut channels and the whole sample is collected for analysis. There is no correlation between sample length and assay values.</p> <ul style="list-style-type: none"> - 193 surface and underground channels have been used in the CEL resource estimate.

Challenger Gold Limited
ACN 123 591 382
ASX: **CEL**

Issued Capital
1,393.8m shares
126.7m options (\$0.14)
68.1m perf rights

Australian Registered Office
Level 1
100 Havelock Street
West Perth WA 6005

Directors
Mr Kris Knauer, MD and CEO
Mr Sergio Rotonondo, Chairman
Dr Sonia Delgado, Exec. Director
Mr Fletcher Quinn, Non-Exec. Director
Mr Pini Althaus, Non Exec Director
Mr Brett Hackett Non Exec Director

Contact
T: +61 8 6385 2743
E: admin@challengergold.com

Criteria	JORC Code explanation	Commentary
		<p>Channels total 2597.70 metres in length. The average weight per metre sampled is 3.7 kg/m which is adequate for the rock being sampled and compares well with the expected weight for ½ cut HQ3 drill core of 4.1 kg/m.</p> <p>A possible relationship has been observed in historic drilling between sample recovery and Au Ag or Zn values whereby low recoveries have resulted lower reported values. Historic core recovery data is incomplete. Core recovery is influenced by the intensity of natural fracturing in the rock. A positive correlation between recovery and RQD has been observed. The fracturing is generally post mineral and not directly associated with the mineralisation.</p>
Logging	<ul style="list-style-type: none"> - <i>Whether core and chip samples have been geologically and geotechnically logged to a level of detail to support appropriate Mineral Resource estimation mining studies and metallurgical studies.</i> - <i>Whether logging is qualitative or quantitative in nature. Core (or costean channel etc) photography.</i> - <i>The total length and percentage of the relevant intersections logged.</i> 	<p>For CEL drilling, all the core (100%) is photographed and logged for recovery, RQD, weathering, lithology, alteration, mineralization, and structure to a level that is suitable for geological modelling, Mineral Resource Estimation and metallurgical test work. RC drill chips are logged for geology, alteration and mineralisation to a level that is suitable for geological modelling resource estimation and metallurgical test work. Where possible logging is quantitative. Geological logging is done into MS Excel in a format that can readily be cross-checked and is back-up transferred to a secure, offsite, cloud-based database which holds all drill hole logging sample and assay data.</p> <p>No specialist geotechnical logging has been undertaken.</p> <p>Detailed logs are available for most of the historical drilling. Some logs have not been recovered. No core photographs from the historic drilling have been found. No drill core has survived due to poor storage and neglect. No historic RC sample chips have been found.</p>
Sub-sampling techniques and sample preparation	<ul style="list-style-type: none"> - <i>If core whether cut or sawn and whether quarter half or all core taken.</i> - <i>If non-core whether riffling tube sampled rotary split etc and whether sampled wet or dry.</i> - <i>For all sample types the nature quality and appropriateness of the sample preparation technique.</i> - <i>Quality control procedures adopted for all sub-sampling stages to maximise representivity of samples.</i> - <i>Measures taken to ensure that the sampling is representative of</i> 	<p>CEL samples have been submitted to the MSA laboratory in San Juan, the ALS laboratory in Mendoza and the former SGS laboratory in San Juan for sample preparation. The sample preparation technique is considered appropriate for the style of mineralization present in the Project.</p> <p>Sample sizes are appropriate for the mineralisation style and grain size of the deposit.</p> <p>Sample intervals are selected based on lithology, alteration, and mineralization boundaries. Representative samples of all of the core are selected. Sample length averages 1.74m. Second-half core or ¼ core samples have been submitted for a mineralised interval in 1 drill hole only and for some metallurgical samples. The second half of the core samples has been retained in the core trays for future reference.</p> <p>Competent drill core is cut longitudinally using a diamond saw for sampling of ½ the core. Softer core is split using a wide blade chisel or a manual core split press. The geologist logging the core, marks where the saw cut or split is to be made to ensure half-core sample representivity.</p> <p>From GNDD073 and later holes, duplicate core samples consisting of two ¼ core samples over the same interval have been collected approximately every 30-50m drilled.</p>

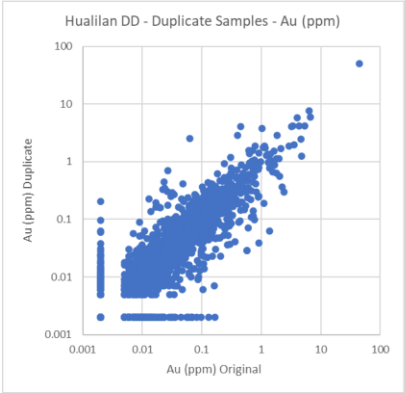
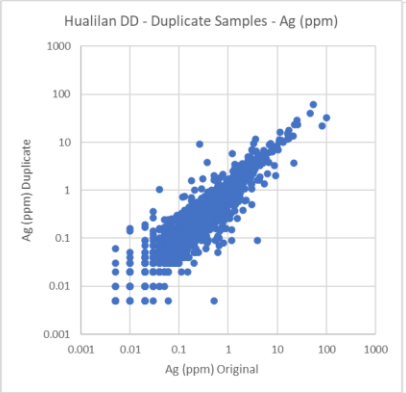
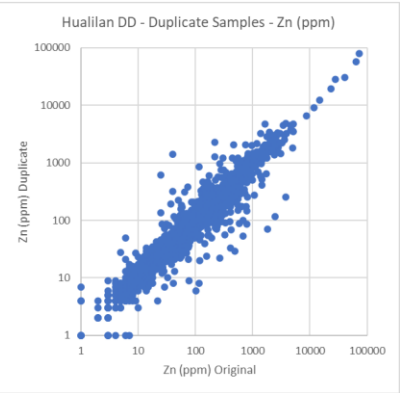
Challenger Gold Limited
ACN 123 591 382
ASX: **CEL**

Issued Capital
1,393.8m shares
126.7m options (\$0.14)
68.1m perf rights

Australian Registered Office
Level 1
100 Havelock Street
West Perth WA 6005

Directors
Mr Kris Knauer, MD and CEO
Mr Sergio Rotondo, Chairman
Dr Sonia Delgado, Exec. Director
Mr Fletcher Quinn, Non-Exec. Director
Mr Pini Althaus, Non Exec Director
Mr Brett Hackett Non Exec Director

Contact
T: +61 8 6385 2743
E: admin@challengergold.com

Criteria	JORC Code explanation	Commentary																																																																																							
	<p><i>the in-situ material collected including for instance results for field duplicate/second-half sampling.</i></p> <ul style="list-style-type: none"> <i>Whether sample sizes are appropriate to the grain size of the material being sampled.</i> 	<p>Duplicate core sample results and correlation plots (log scale for Au, Ag, Zn, Pb, Fe and S) are shown below:</p> <table border="1"> <thead> <tr> <th rowspan="2"></th> <th rowspan="2">count</th> <th rowspan="2">RSQ</th> <th colspan="2">mean</th> <th colspan="2">median</th> <th colspan="2">variance</th> </tr> <tr> <th>original</th> <th>duplicate</th> <th>original</th> <th>duplicate</th> <th>original</th> <th>duplicate</th> </tr> </thead> <tbody> <tr> <td>Au (ppm)</td> <td>3,523</td> <td>0.960</td> <td>0.076</td> <td>0.077</td> <td>0.007</td> <td>0.006</td> <td>0.640</td> <td>0.816</td> </tr> <tr> <td>Ag (ppm)</td> <td>3,523</td> <td>0.696</td> <td>0.53</td> <td>0.48</td> <td>0.17</td> <td>0.16</td> <td>7.99</td> <td>3.55</td> </tr> <tr> <td>Cd (ppm)</td> <td>3,523</td> <td>0.979</td> <td>1.34</td> <td>1.26</td> <td>0.08</td> <td>0.08</td> <td>160.63</td> <td>144.11</td> </tr> <tr> <td>Cu (ppm)</td> <td>3,523</td> <td>0.451</td> <td>14.84</td> <td>13.85</td> <td>3.40</td> <td>3.30</td> <td>4.3E+03</td> <td>2.5E+03</td> </tr> <tr> <td>Fe (%)</td> <td>3,523</td> <td>0.990</td> <td>1.997</td> <td>1.996</td> <td>1.700</td> <td>1.710</td> <td>3.74</td> <td>3.75</td> </tr> <tr> <td>Pb (ppm)</td> <td>3,523</td> <td>0.940</td> <td>64.7</td> <td>62.4</td> <td>13.7</td> <td>13.4</td> <td>1.9E+05</td> <td>2.7E+05</td> </tr> <tr> <td>S (%)</td> <td>3,523</td> <td>0.973</td> <td>0.333</td> <td>0.330</td> <td>0.140</td> <td>0.140</td> <td>0.346</td> <td>0.332</td> </tr> <tr> <td>Zn (ppm)</td> <td>3,523</td> <td>0.976</td> <td>254</td> <td>243</td> <td>73</td> <td>72</td> <td>3.8.E+06</td> <td>3.5.E+06</td> </tr> </tbody> </table> <p>RSQ = R squared</p> <div style="display: flex; justify-content: space-around;">    </div>		count	RSQ	mean		median		variance		original	duplicate	original	duplicate	original	duplicate	Au (ppm)	3,523	0.960	0.076	0.077	0.007	0.006	0.640	0.816	Ag (ppm)	3,523	0.696	0.53	0.48	0.17	0.16	7.99	3.55	Cd (ppm)	3,523	0.979	1.34	1.26	0.08	0.08	160.63	144.11	Cu (ppm)	3,523	0.451	14.84	13.85	3.40	3.30	4.3E+03	2.5E+03	Fe (%)	3,523	0.990	1.997	1.996	1.700	1.710	3.74	3.75	Pb (ppm)	3,523	0.940	64.7	62.4	13.7	13.4	1.9E+05	2.7E+05	S (%)	3,523	0.973	0.333	0.330	0.140	0.140	0.346	0.332	Zn (ppm)	3,523	0.976	254	243	73	72	3.8.E+06	3.5.E+06
	count	RSQ				mean		median		variance																																																																															
			original	duplicate	original	duplicate	original	duplicate																																																																																	
Au (ppm)	3,523	0.960	0.076	0.077	0.007	0.006	0.640	0.816																																																																																	
Ag (ppm)	3,523	0.696	0.53	0.48	0.17	0.16	7.99	3.55																																																																																	
Cd (ppm)	3,523	0.979	1.34	1.26	0.08	0.08	160.63	144.11																																																																																	
Cu (ppm)	3,523	0.451	14.84	13.85	3.40	3.30	4.3E+03	2.5E+03																																																																																	
Fe (%)	3,523	0.990	1.997	1.996	1.700	1.710	3.74	3.75																																																																																	
Pb (ppm)	3,523	0.940	64.7	62.4	13.7	13.4	1.9E+05	2.7E+05																																																																																	
S (%)	3,523	0.973	0.333	0.330	0.140	0.140	0.346	0.332																																																																																	
Zn (ppm)	3,523	0.976	254	243	73	72	3.8.E+06	3.5.E+06																																																																																	

Challenger Gold Limited
ACN 123 591 382
ASX: **CEL**

Issued Capital
1,393.8m shares
126.7m options (\$0.14)
68.1m perf rights

Australian Registered Office
Level 1
100 Havelock Street
West Perth WA 6005

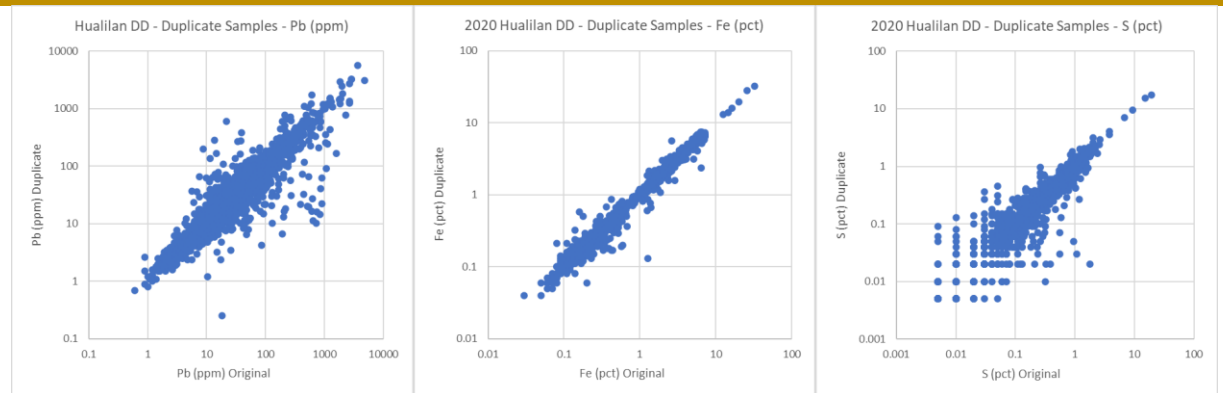
Directors
Mr Kris Knauer, MD and CEO
Mr Sergio Rotondo, Chairman
Dr Sonia Delgado, Exec. Director
Mr Fletcher Quinn, Non-Exec. Director
Mr Pini Althaus, Non Exec Director
Mr Brett Hackett Non Exec Director

Contact
T: +61 8 6385 2743
E: admin@challengergold.com

Criteria

JORC Code explanation

Commentary



RC sub-samples over 1m intervals are collected at the drill site from a cyclone mounted on the drill rig. A duplicate RC sample is collected for every 25-30m drilled.

The duplicate RC sample results and correlation plots (log scale for Au, Ag, Zn, Pb, Fe and S) are shown below:

	count	RSQ	mean		median		variance	
			original	duplicate	original	duplicate	original	duplicate
Au (ppm)	85	0.799	0.101	0.140	0.017	0.016	0.041	0.115
Ag (ppm)	85	0.691	1.74	2.43	0.59	0.58	13.59	64.29
Cd (ppm)	85	0.989	15.51	16.34	0.41	0.44	4189	4737
Cu (ppm)	85	0.975	47.74	53.86	5.80	5.70	2.4E+04	3.1E+04
Fe (%)	85	0.997	1.470	1.503	0.450	0.410	7.6	7.6
Pb (ppm)	85	0.887	296.0	350.6	26.3	32.4	6.0E+05	7.4E+05
S (%)	85	0.972	0.113	0.126	0.020	0.020	0.046	0.062
Zn (ppm)	85	0.977	3399	3234	158	177	2.5.E+08	2.1.E+08

RSQ = R squared

Challenger Gold Limited
 ACN 123 591 382
 ASX: **CEL**

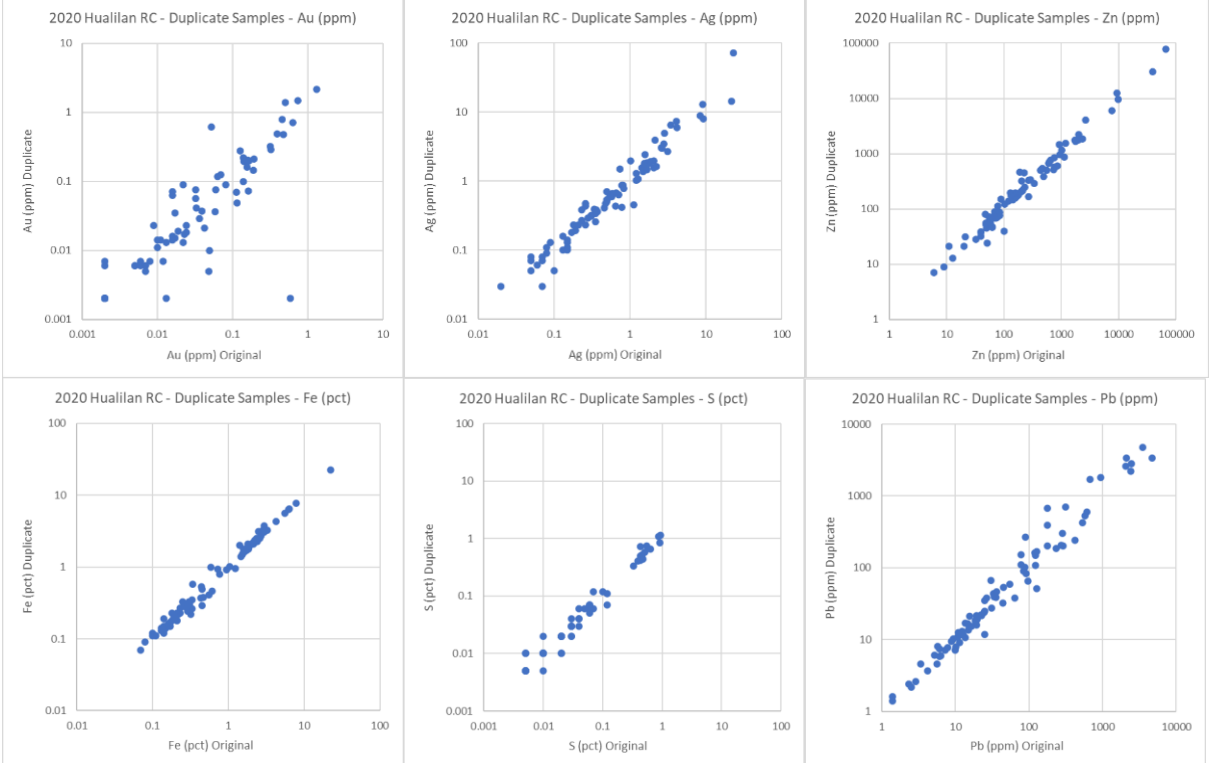
Issued Capital
 1,393.8m shares
 126.7m options (\$0.14)
 68.1m perf rights

Australian Registered Office
 Level 1
 100 Havelock Street
 West Perth WA 6005

Directors
 Mr Kris Knauer, MD and CEO
 Mr Sergio Rotondo, Chairman
 Dr Sonia Delgado, Exec. Director
 Mr Fletcher Quinn, Non-Exec. Director
 Mr Pini Althaus, Non Exec Director
 Mr Brett Hackett Non Exec Director

Contact
 T: +61 8 6385 2743
 E: admin@challengergold.com

Criteria	JORC Code explanation	Commentary
----------	-----------------------	------------



45 duplicate channel sample assays have been collected from the underground and surface sampling program. These data show more scatter due to surface weathering.

The duplicate channel sample results and correlation plots (log scale for Au, Ag, Zn, Pb, Fe and S) are shown below:

	count	RSQ	mean		median		variance	
			original	duplicate	original	duplicate	original	duplicate
Au (ppm)	45	0.296	1.211	2.025	0.042	0.039	8.988	23.498
Ag (ppm)	45	0.037	8.42	23.25	1.09	1.22	177.31	3990.47
Cd (ppm)	45	0.373	124.23	77.85	7.54	7.80	61687.10	26171.51
Cu (ppm)	45	0.476	713.23	802.79	46.20	37.40	2.8E+06	3.0E+06

Challenger Gold Limited
 ACN 123 591 382
 ASX: **CEL**

Issued Capital
 1,393.8m shares
 126.7m options (\$0.14)
 68.1m perf rights

Australian Registered Office
 Level 1
 100 Havelock Street
 West Perth WA 6005

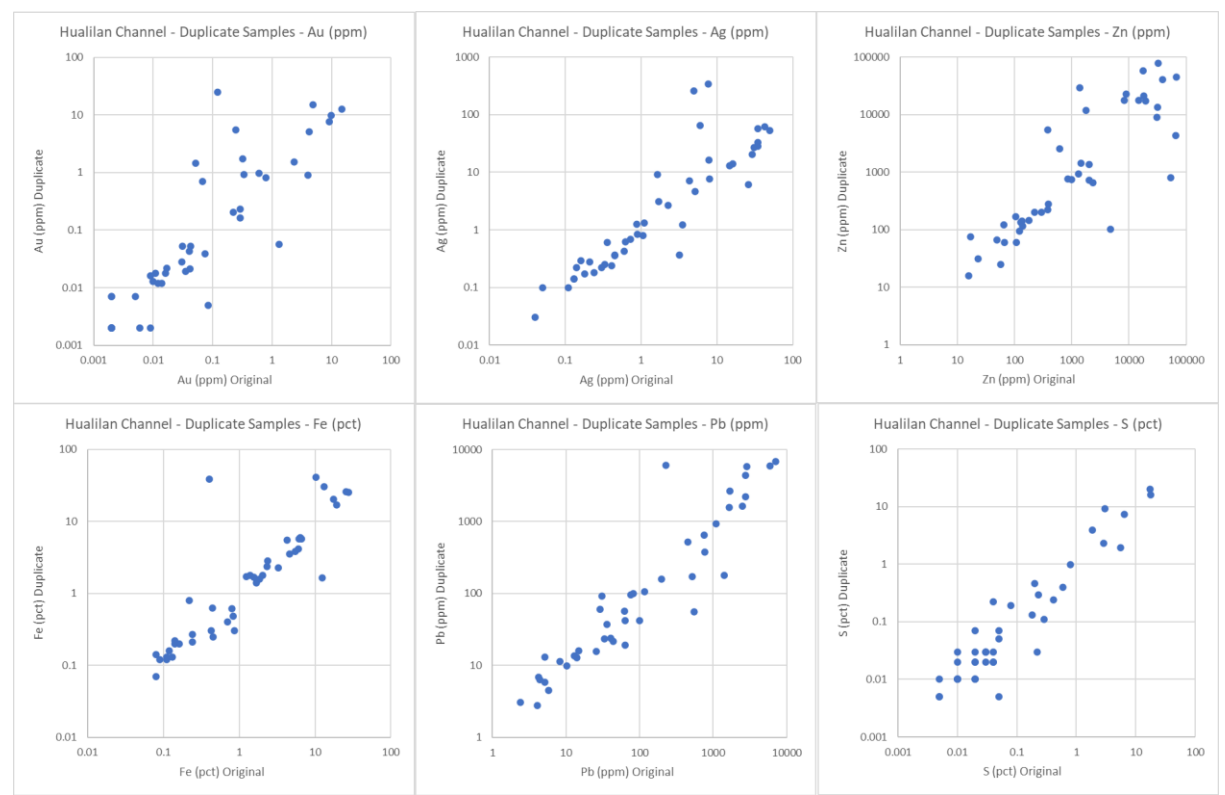
Directors
 Mr Kris Knauer, MD and CEO
 Mr Sergio Rotonondo, Chairman
 Dr Sonia Delgado, Exec. Director
 Mr Fletcher Quinn, Non-Exec. Director
 Mr Pini Althaus, Non Exec Director
 Mr Brett Hackett Non Exec Director

Contact
 T: +61 8 6385 2743
 E: admin@challengergold.com

Criteria	JORC Code explanation	Commentary
----------	-----------------------	------------

Fe (%)	45	0.428	4.266	5.745	1.390	1.560	44.4	107.0
Pb (ppm)	45	0.007	955.4	3776.0	75.3	60.7	3.5E+06	3.0E+08
S (%)	45	0.908	1.307	1.432	0.040	0.030	14.294	16.234
Zn (ppm)	45	0.509	15117	12684	1300	763	8.8.E+08	5.2.E+08

RSQ = R squared



Quality of assay data and laboratory tests - *The nature quality and appropriateness of the assaying and laboratory procedures used and whether the technique is*

The MSA laboratory used for sample preparation in San Juan was inspected by Stuart Munroe (Exploration Manager) and Sergio Rotondo (CEL Director) prior to any samples being submitted. The laboratory has been visited and reviewed most recently by Stuart Munroe (Exploration Manager) in May 2022. The laboratory procedures are consistent with international best practice and are suitable for samples from the Project. The SGS laboratory in San Juan and the ALS laboratory in Mendoza has not yet been inspected by CEL.

Challenger Gold Limited
 ACN 123 591 382
 ASX: **CEL**

Issued Capital
 1,393.8m shares
 126.7m options (\$0.14)
 68.1m perf rights

Australian Registered Office
 Level 1
 100 Havelock Street
 West Perth WA 6005

Directors
 Mr Kris Knauer, MD and CEO
 Mr Sergio Rotondo, Chairman
 Dr Sonia Delgado, Exec. Director
 Mr Fletcher Quinn, Non-Exec. Director
 Mr Pini Althaus, Non Exec Director
 Mr Brett Hackett Non Exec Director

Contact
 T: +61 8 6385 2743
 E: admin@challengergold.com

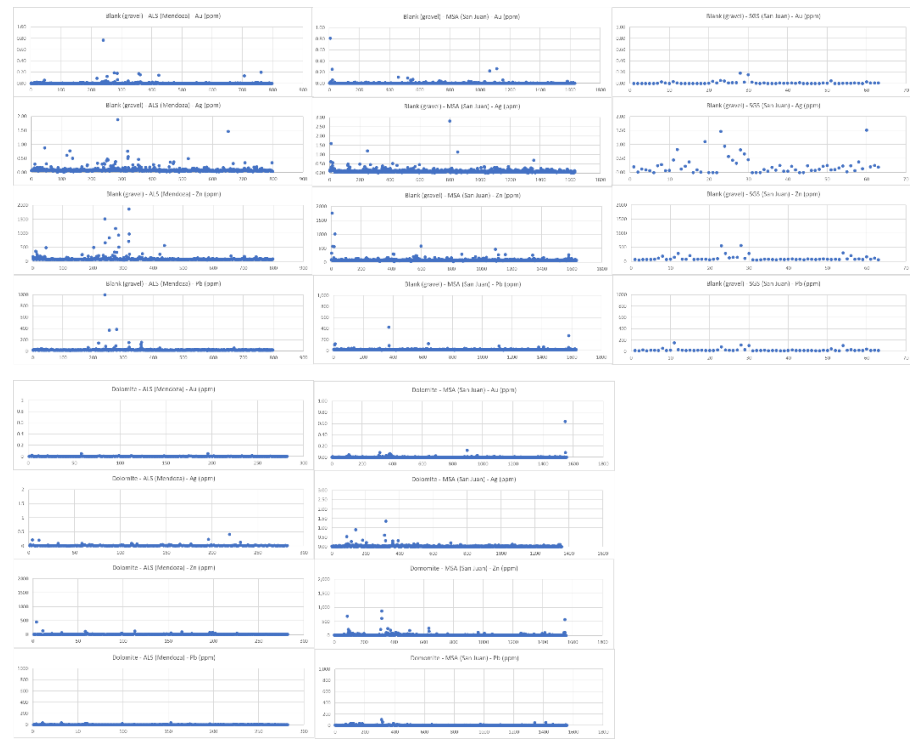
Criteria	JORC Code explanation	Commentary
----------	-----------------------	------------

considered partial or total.

- For geophysical tools spectrometers handheld XRF instruments etc the parameters used in determining the analysis including instrument make and model reading times calibrations factors applied and their derivation etc.
- Nature of quality control procedures adopted (eg standards blanks duplicates external laboratory checks) and whether acceptable levels of accuracy (i.e. lack of bias) and precision have been established.

representatives due to COVID-19 restrictions. Each laboratory presents internal laboratory standards for each job to gauge precision and accuracy of assays reported.

CEL have used two different blank samples, submitted with drill core and subjected to the same preparation and assay as the core samples, RC sub-samples and channel samples. The blank samples are sourced from surface gravels in the Las Flores area of San Juan and from a commercial dolomite quarry near San Juan. In both cases the blank material is commonly for construction. Commonly, the blank samples are strategically placed in the sample sequence immediately after samples that were suspected of containing higher grade Au, Ag, S or base metals to test the lab preparation and contamination procedures. The values received from the blank samples suggest only rare cross contamination of samples during sample preparation.



For GNDD001 – GNDD010 samples analysed by MSA in 2019, three different Certified Standard Reference pulp samples (CRM) with known values for Au Ag Pb Cu and Zn were submitted with samples of drill core to test the precision and accuracy of the analytic procedures MSA laboratory in Canada. 26 reference analyses were analysed in the samples submitted in 2019. The standards demonstrate suitable precision and accuracy of the

Challenger Gold Limited
ACN 123 591 382
ASX: **CEL**

Issued Capital
1,393.8m shares
126.7m options (\$0.14)
68.1m perf rights

Australian Registered Office
Level 1
100 Havelock Street
West Perth WA 6005

Directors
Mr Kris Knauer, MD and CEO
Mr Sergio Rotondo, Chairman
Dr Sonia Delgado, Exec. Director
Mr Fletcher Quinn, Non-Exec. Director
Mr Pini Althaus, Non Exec Director
Mr Brett Hackett Non Exec Director

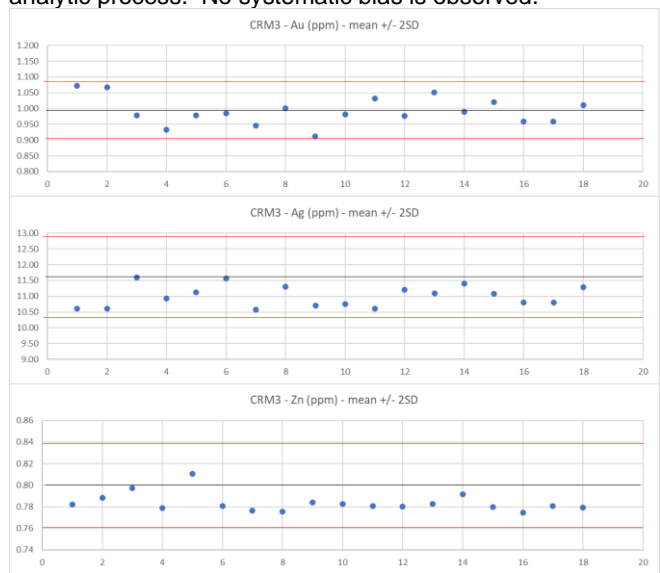
Contact
T: +61 8 6385 2743
E: admin@challengergold.com

Criteria

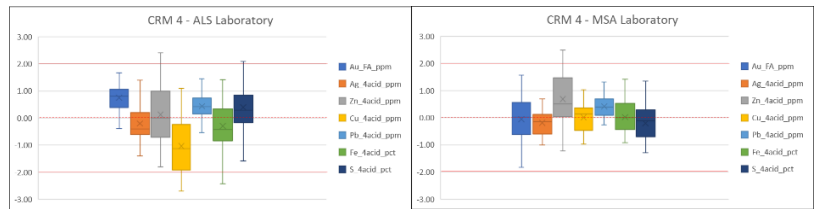
JORC Code explanation

Commentary

analytic process. No systematic bias is observed.



For drill holes from GNDD011 plus unsampled intervals from the 2019 drilling, 17 different multi-element Certified Standard Reference pulp samples (CRM) with known values for Au Ag Fe S Pb Cu and Zn. 7 different CRM's with known values for Au only have been submitted with samples of drill core, RC chips and channel samples to test the precision and accuracy of the analytic procedures of the MSA,ALS and SGS laboratories used. In the results received to date there has been no systematic bias is observed. The standards demonstrate suitable precision and accuracy of the analytic process. A summary of the standard deviations from the expected values for CRM's used is summarised below. Generally, an average of standard deviations close to zero indicates a high degree of accuracy and a low range of standard deviations with a low fail count indicates a high degree of precision.



Challenger Gold Limited
ACN 123 591 382
ASX: **CEL**

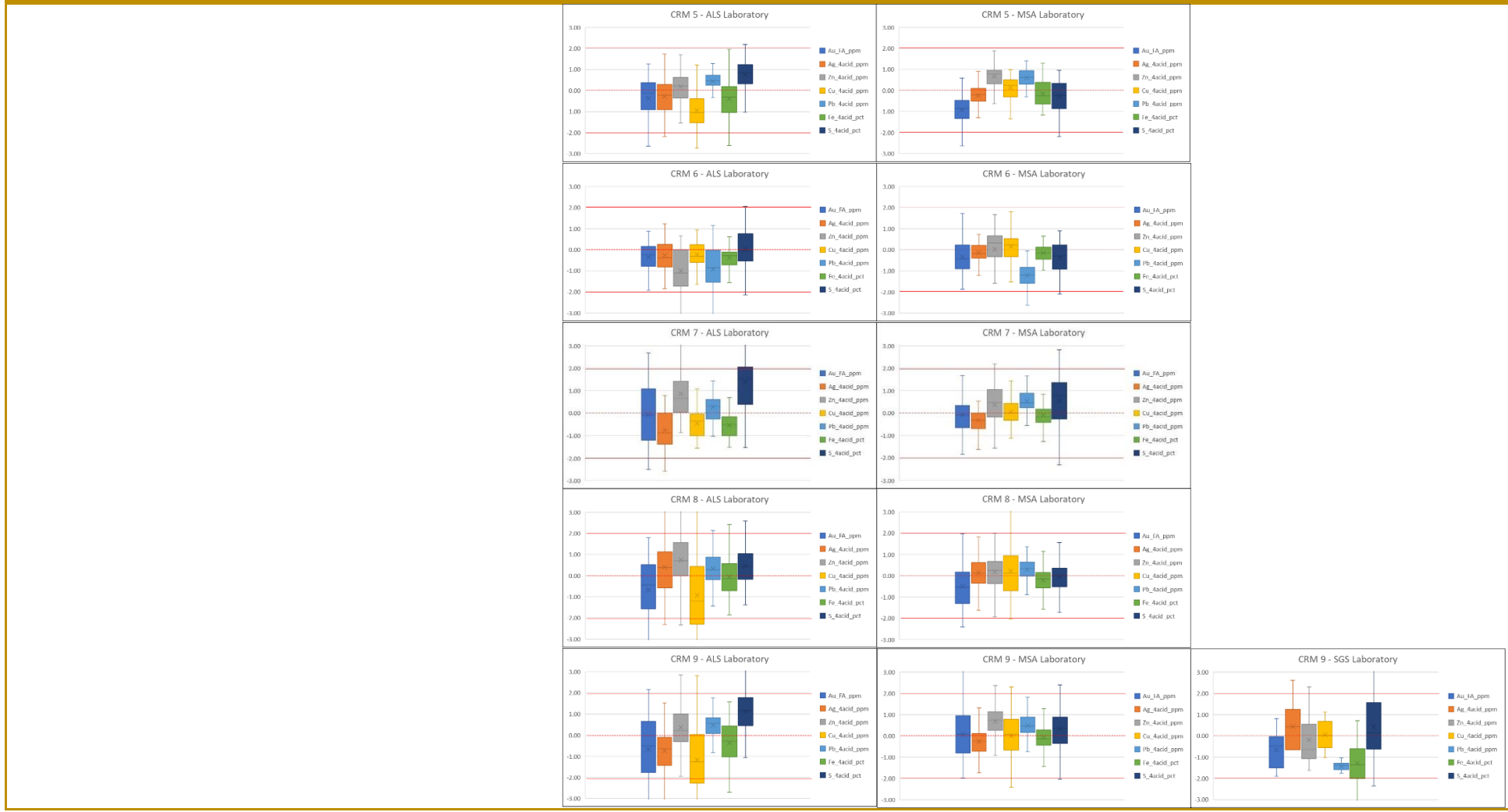
Issued Capital
1,393.8m shares
126.7m options (\$0.14)
68.1m perf rights

Australian Registered Office
Level 1
100 Havelock Street
West Perth WA 6005

Directors
Mr Kris Knauer, MD and CEO
Mr Sergio Rotondo, Chairman
Dr Sonia Delgado, Exec. Director
Mr Fletcher Quinn, Non-Exec. Director
Mr Pini Althaus, Non Exec Director
Mr Brett Hackett Non Exec Director

Contact
T: +61 8 6385 2743
E: admin@challengergold.com

Criteria **JORC Code explanation** **Commentary**



Challenger Gold Limited
 ACN 123 591 382
 ASX: **CEL**

Issued Capital
 1,393.8m shares
 126.7m options (\$0.14)
 68.1m perf rights

Australian Registered Office
 Level 1
 100 Havelock Street
 West Perth WA 6005

Directors
 Mr Kris Knauer, MD and CEO
 Mr Sergio Rotondo, Chairman
 Dr Sonia Delgado, Exec. Director
 Mr Fletcher Quinn, Non-Exec. Director
 Mr Pini Althaus, Non Exec Director
 Mr Brett Hackett Non Exec Director

Contact
 T: +61 8 6385 2743
 E: admin@challengergold.com

Criteria **JORC Code explanation** **Commentary**



Challenger Gold Limited
 ACN 123 591 382
 ASX: **CEL**

Issued Capital
 1,393.8m shares
 126.7m options (\$0.14)
 68.1m perf rights

Australian Registered Office
 Level 1
 100 Havelock Street
 West Perth WA 6005

Directors
 Mr Kris Knauer, MD and CEO
 Mr Sergio Rotondo, Chairman
 Dr Sonia Delgado, Exec. Director
 Mr Fletcher Quinn, Non-Exec. Director
 Mr Pini Althaus, Non Exec Director
 Mr Brett Hackett Non Exec Director

Contact
 T: +61 8 6385 2743
 E: admin@challengergold.com

Criteria	JORC Code explanation	Commentary
----------	-----------------------	------------

		<p>CRM 15 - MSA Laboratory</p>
	<p>CRM 16 to 22 - ALS Laboratory (gold only)</p>	<p>CRM 16 to 22 - MSA Laboratory (gold only)</p>
	<p>CRM 23 - ALS Laboratory</p>	<p>CRM 23 - MSA Laboratory</p>
	<p>CRM 24 - ALS Laboratory</p>	<p>CRM 24 - MSA Laboratory</p>
	<p>CRM 25 - ALS Laboratory</p>	<p>CRM 25 - MSA Laboratory</p>

Challenger Gold Limited
 ACN 123 591 382
 ASX: **CEL**

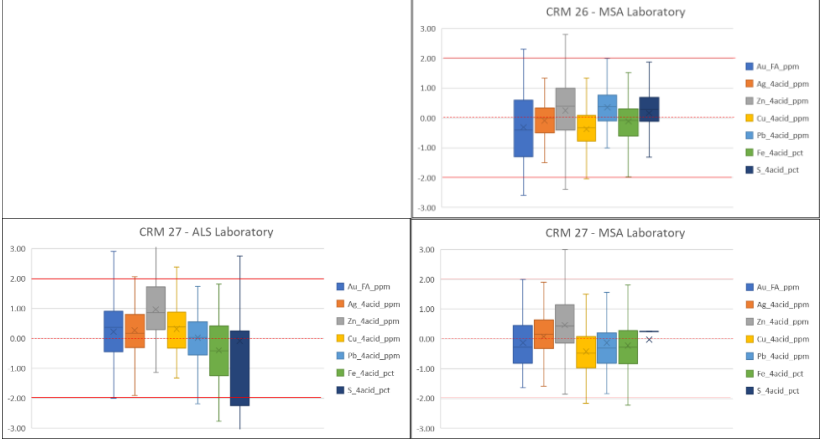
Issued Capital
 1,393.8m shares
 126.7m options (\$0.14)
 68.1m perf rights

Australian Registered Office
 Level 1
 100 Havelock Street
 West Perth WA 6005

Directors
 Mr Kris Knauer, MD and CEO
 Mr Sergio Rotoondo, Chairman
 Dr Sonia Delgado, Exec. Director
 Mr Fletcher Quinn, Non-Exec. Director
 Mr Pini Althaus, Non Exec Director
 Mr Brett Hackett Non Exec Director

Contact
 T: +61 8 6385 2743
 E: admin@challengergold.com

Criteria	JORC Code explanation	Commentary
----------	-----------------------	------------



Verification of sampling and assaying

- The verification of significant intersections by either independent or alternative company personnel.
- The use of twinned holes.
- Documentation of primary data entry procedures data verification data storage (physical and electronic) protocols.
- Discuss any adjustment to assay data.

Final sample assay analyses are received by digital file in PDF and CSV format. There is no adjustment made to any of the assay values received. The original files are backed-up and the data copied into a cloud-based drill hole database, stored offsite from the project. The data is remotely accessible for geological modelling and resource estimation.

Assay results summarised in the context of this report have been rounded appropriately to 2 significant figures. No assay data have been otherwise adjusted. Replicate assay of 186 coarse reject samples from 2019 drilling has been done to verify assay precision. Original core samples were from the 2019 DD drilling which were analysed by MSA (San Juan preparation and Vancouver analysis). Coarse reject samples were analysed by ALS (Mendoza preparation and Vancouver analysis). The repeat analysis technique was identical to the original. The repeat analyses correlate very closely with the original analyses providing high confidence in precision of results between MSA and ALS. A summary of the results for the 186 sample pairs for key elements is provided below:

Element	Mean		Median		Std Deviation		Correlation coefficient
	MSA	ALS	MSA	ALS	MSA	ALS	
Au (FA and GFA ppm)	4.24	4.27	0.50	0.49	11.15	11.00	0.9972
Ag (ICP and ICF ppm)	30.1	31.1	5.8	6.2	72.4	73.9	0.9903
Zn ppm (ICP ppm and ICF %)	12312	12636	2574	2715	32648	33744	0.9997
Cu ppm (ICP ppm and ICF %)	464	474	74	80	1028	1050	0.9994
Pb ppm (ICP ppm and ICF %)	1944	1983	403	427	6626	6704	0.9997
S (ICP and ICF %)	2.05	1.95	0.05	0.06	5.53	5.10	0.9987
Cd (ICP ppm)	68.5	68.8	12.4	12.8	162.4	159.3	0.9988

Challenger Gold Limited
ACN 123 591 382
ASX: **CEL**

Issued Capital
1,393.8m shares
126.7m options (\$0.14)
68.1m perf rights

Australian Registered Office
Level 1
100 Havelock Street
West Perth WA 6005

Directors
Mr Kris Knauer, MD and CEO
Mr Sergio Rotondo, Chairman
Dr Sonia Delgado, Exec. Director
Mr Fletcher Quinn, Non-Exec. Director
Mr Pini Althaus, Non Exec Director
Mr Brett Hackett Non Exec Director

Contact
T: +61 8 6385 2743
E: admin@challengergold.com

Criteria	JORC Code explanation	Commentary								
		As (ICP ppm)	76.0	79.5	45.8	47.6	88.1	90.6	0.9983	
		Fe (ICP %)	4.96	4.91	2.12	2.19	6.87	6.72	0.9994	
		REE (ICP ppm)	55.1	56.2	28.7	31.6	98.2	97.6	0.9954	
		Cd values >1000 are set at 1000.								
		REE is the sum off Ce, La, Sc, Y. CE > 500 is set at 500. Below detection is set at zero								
		Replicate assay of 192 coarse reject samples from 2021 drilling has been done to verify assay precision. Original core samples were from the 2021 DD drilling which were analysed by SGS Laboratories (San Juan preparation and Lima analysis). Coarse reject samples were prepared and analysed by ALS (Mendoza preparation and Lima analysis). The repeat analysis technique was identical to the original. Except for Mo (molybdenum), the repeat analyses correlate closely with the original analyses providing confidence in precision of results between SGS and ALS. A summary of the results for the 192 sample pairs for key elements is provided below:								
			Mean		Median		Std Deviation			
		Element	count	SGS	ALS	SGS	ALS	SGS	ALS	Correlation coefficient
		Au (FA and GFA ppm)	192	1.754	1.680	0.432	0.441	20.8	21.5	0.9837
		Ag (ICP and ICF ppm)	192	12.14	11.57	0.93	1.03	7085	5925	0.9995
		Zn (ICP and ICF ppm)	192	6829	7052	709	685	4.54E+08	5.34E+08	0.9942
		Cu (ICP and ICF ppm)	192	203.4	202.9	25.7	24.5	3.30E+05	3.35E+05	0.9967
		Pb (ICP and ICF ppm)	192	1768	1719	94.7	91.6	5.04E+07	4.39E+07	0.9959
		S (ICP and ICF %)	192	2.23	2.10	0.94	0.87	16.51	15.56	0.9953
		Cd (ICP ppm)	192	43.9	42.4	4.1	4.0	19594	18511	0.9956
		As (ICP ppm)	192	45.4	45.2	16.0	16.9	10823	9893	0.9947
		Fe (ICP %)	189	3.07	3.30	2.38	2.31	4.80	9.28	0.9781
		REE (ICP ppm)	192	63.5	72.8	39.4	44.3	3414	4647	0.9096
		Mo (ICP and ICF ppm)	192	7.69	1.68	6.74	0.97	85.83	10.33	0.3026
		Values below detection were set to half the detection limit								
		Limit of detection for Fe was exceeded for 3 samples submitted to SGS with no overlimit analysis								
		REE is the sum off Ce, La, Sc, Y. Vaues below detection were set at zero.								
		Replicate assay of 140 pulp reject samples from the 2022 drill (parts of drill holes GNDD654 and GNDD666) was done to check assay precision. The original pulps were analysed by MSA laboratories (San Juan preparation and Vancouver, Canada analysis). Replicate pulps were analysed by ALS (Lima, Peru). The analytic techniques were identical at both laboratories.								
			Mean		Median		Std Deviation			

Challenger Gold Limited
ACN 123 591 382
ASX: **CEL**

Issued Capital
1,393.8m shares
126.7m options (\$0.14)
68.1m perf rights

Australian Registered Office
Level 1
100 Havelock Street
West Perth WA 6005

Directors
Mr Kris Knauer, MD and CEO
Mr Sergio Rotonondo, Chairman
Dr Sonia Delgado, Exec. Director
Mr Fletcher Quinn, Non-Exec. Director
Mr Pini Althaus, Non Exec Director
Mr Brett Hackett Non Exec Director

Contact
T: +61 8 6385 2743
E: admin@challengergold.com

Criteria	JORC Code explanation	Commentary								
		Element	count	SGS	ALS	SGS	ALS	SGS	ALS	Correlation coefficient
		Au (FA ppm)	140	0.27	0.30	0.01	0.02	0.98	1.05	0.9829
		Ag (ICP ppm)	140	1.16	1.14	0.16	0.16	6.15	6.31	0.9965
		Zn (ICP ppm)	140	555	565	50	56	2471	2469	0.9996
		Pb (ICP ppm)	140	92.3	95.4	13.6	13.5	338	351	0.9977
		S (ICP %)	140	0.64	0.61	0.17	0.17	1.22	1.12	0.9982
		Fe (ICP %)	140	1.62	1.59	0.64	0.66	1.91	1.88	0.9991
		<p>CEL have sought to twin and triplicate some of the historic and recent drill holes to check the results of previous exploration. A preliminary analysis of the twin holes indicates similar widths and grades for key elements assayed. The twin holes are: GNDD003 – DDH34 and 04HD08 GNRC110 – DDH53 GNDD144 – GNDD021 – 05HD39 GNRC107 – GNDD008/008A GNDD206 – DDH54 GNDD421 – GNDD424</p>								
Location of data points	<ul style="list-style-type: none"> - Accuracy and quality of surveys used to locate drill holes (collar and down-hole surveys) trenches mine workings and other locations used in Mineral Resource estimation. - Specification of the grid system used. - Quality and adequacy of topographic control. 	<p>Following completion of drilling, collars are marked and surveyed using a differential GPS (DGPS) relative to a nearby Argentinian SGM survey point. The collars have been surveyed in POSGAR 2007 zone 2 and converted to WGS84 UTM zone 19s.</p> <p>Following completion of the channel sampling, the location of the channel samples is surveyed from a survey mark at the entrance to the underground workings, located using differential GPS. The locations have been surveyed in POSGAR 2007 zone 2 and converted to WGS84 UTM zone 19s.</p> <p>The drill machine is set-up on the drill pad using hand-held survey equipment according to the proposed hole design.</p> <p>Diamond core drill holes up to GNDD390 are surveyed down-hole at 30-40m intervals down hole using a down-hole compass and inclinometer tool. RC drill holes and diamond core holes from GNDD391 were continuously surveyed down hole using a gyroscope to avoid magnetic influence from the drill string and rocks. The gyroscope down-hole survey data is recorded in the drill hole database at 10m intervals.</p> <p>Ten diamond drill holes have no down hole survey data due to drill hole collapse or blockage of the hole due to loss of drilling equipment. These are GNDD036, 197, 212, 283, 376, 423, 425, 439, 445 and 465. For these holes, a survey of the collar has been used with no assumed deviation to the end of the hole.</p> <p>All current and previous drill collar sites, Minas corner pegs and strategic surface points have been surveyed using DGPS to provide topographic control for the Project. In addition, AWD3D DTM model with a nominal 2.5 metre precision has been acquired for the project and greater surrounding areas. Drone-based topographic</p>								

Challenger Gold Limited
ACN 123 591 382
ASX: **CEL**

Issued Capital
1,393.8m shares
126.7m options (\$0.14)
68.1m perf rights

Australian Registered Office
Level 1
100 Havelock Street
West Perth WA 6005

Directors
Mr Kris Knauer, MD and CEO
Mr Sergio Rotonondo, Chairman
Dr Sonia Delgado, Exec. Director
Mr Fletcher Quinn, Non-Exec. Director
Mr Pini Althaus, Non Exec Director
Mr Brett Hackett Non Exec Director

Contact
T: +61 8 6385 2743
E: admin@challengergold.com

Criteria	JORC Code explanation	Commentary
		survey data with 0.1 meter precision is being acquired over the project to provide more detail where required.
Data spacing and distribution	<ul style="list-style-type: none"> - <i>Data spacing for reporting of Exploration Results.</i> - <i>Whether the data spacing and distribution is sufficient to establish the degree of geological and grade continuity appropriate for the Mineral Resource and Ore Reserve estimation procedure(s) and classifications applied.</i> - <i>Whether sample compositing has been applied.</i> 	<p>Nominal 80m x 80m, 40m x 80m and 40m x 40m drill spacing is being applied to the drilling to define mineralised areas to Indicated Resource level of confidence, where appropriate. Drilling has been completed to check previous exploration, extend mineralisation along strike, and provide some information to establish controls on mineralization and exploration potential.</p> <p>Samples have not been composited.</p>
Orientation of data in relation to geological structure	<ul style="list-style-type: none"> - <i>Whether the orientation of sampling achieves unbiased sampling of possible structures and the extent to which this is known considering the deposit type.</i> - <i>If the relationship between the drilling orientation and the orientation of key mineralised structures is considered to have introduced a sampling bias this should be assessed and reported if material.</i> 	<p>As far as is currently understood and where practicable, the orientation of sampling achieves unbiased sampling of structures and geology controlling the mineralisation. Some exploration holes have drilled at a low angle to mineralisation and have been followed up with drill holes in the opposite direction to define mineralised domains.</p> <p>For underground channel sampling, the orientation of the sample is determined by the orientation of the workings. Where the sampling is parallel with the strike of the mineralisation, plans showing the location of the sampling relative to the orientation of the mineralisation, weighted average grades and estimates of true thickness are provided to provide a balanced report of the mineralisation that has been sampled.</p> <p>Drilling has been designed to provide an unbiased sample of the geology and mineralisation targeted. In exceptional circumstances, where drill access is restricted, drilling may be non-optimally angled across the mineralised zone.</p>
Sample security	<ul style="list-style-type: none"> - <i>The measures taken to ensure sample security.</i> 	Samples were under constant supervision by site security, senior technical personnel and courier contractors prior to delivery to the preparation laboratories in San Juan and Mendoza.
Audits or reviews	<ul style="list-style-type: none"> - <i>The results of any audits or reviews of sampling techniques and data.</i> 	There has not yet been any independent reviews of the sampling techniques and data.

Challenger Gold Limited
ACN 123 591 382
ASX: **CEL**

Issued Capital
1,393.8m shares
126.7m options (\$0.14)
68.1m perf rights

Australian Registered Office
Level 1
100 Havelock Street
West Perth WA 6005

Directors
Mr Kris Knauer, MD and CEO
Mr Sergio Rotondo, Chairman
Dr Sonia Delgado, Exec. Director
Mr Fletcher Quinn, Non-Exec. Director
Mr Pini Althaus, Non Exec Director
Mr Brett Hackett Non Exec Director

Contact
T: +61 8 6385 2743
E: admin@challengergold.com

Section 2 Reporting of Exploration Results

(Criteria listed in the preceding section also apply to this section.)

Criteria	JORC Code explanation	Commentary																																																																																																																																				
Mineral tenement and land tenure status	<ul style="list-style-type: none"> - Type reference name/number location and ownership including agreements or material issues with third parties such as joint ventures partnerships overriding royalties native title interests historical sites wilderness or national park and environmental settings. - The security of the tenure held at the time of reporting along with any known impediments to obtaining a licence to operate in the area. 	<p>The Hualilan Project comprises fifteen Minas (equivalent of mining leases) and five Demasias (mining lease extensions) held under an farmin agreement with Golden Mining SRL (Cerro Sur) and CIA GPL SRL (Cerro Norte). Fourteen additional Minas and eight exploration licences (Cateos) have been transferred to CEL under a separate farmin agreement. Six Cateos and eight requested mining leases are directly held. This covers all of the currently defined mineralization and surrounding prospective ground. There are no royalties held over the tenements.</p> <p><i>Granted mining leases (Minas Otorgadas) at the Hualilan Project</i></p> <table border="1"> <thead> <tr> <th>Name</th> <th>Number</th> <th>Current Owner</th> <th>Status</th> <th>Grant Date</th> <th>Area (ha)</th> </tr> </thead> <tbody> <tr> <td colspan="6">Cerro Sur</td> </tr> <tr> <td>Divisadero</td> <td>5448-M-1960</td> <td>Golden Mining S.R.L.</td> <td>Granted</td> <td>30/04/2015</td> <td>6</td> </tr> <tr> <td>Flor de Hualilan</td> <td>5448-M-1960</td> <td>Golden Mining S.R.L.</td> <td>Granted</td> <td>30/04/2015</td> <td>6</td> </tr> <tr> <td>Pereyra y Aciar</td> <td>5448-M-1960</td> <td>Golden Mining S.R.L.</td> <td>Granted</td> <td>30/04/2015</td> <td>6</td> </tr> <tr> <td>Bicolor</td> <td>5448-M-1960</td> <td>Golden Mining S.R.L.</td> <td>Granted</td> <td>30/04/2015</td> <td>6</td> </tr> <tr> <td>Sentazon</td> <td>5448-M-1960</td> <td>Golden Mining S.R.L.</td> <td>Granted</td> <td>30/04/2015</td> <td>6</td> </tr> <tr> <td>Muchilera</td> <td>5448-M-1960</td> <td>Golden Mining S.R.L.</td> <td>Granted</td> <td>30/04/2015</td> <td>6</td> </tr> <tr> <td>Magnata</td> <td>5448-M-1960</td> <td>Golden Mining S.R.L.</td> <td>Granted</td> <td>30/04/2015</td> <td>6</td> </tr> <tr> <td>Pizarro</td> <td>5448-M-1960</td> <td>Golden Mining S.R.L.</td> <td>Granted</td> <td>30/04/2015</td> <td>6</td> </tr> <tr> <td colspan="6">Cerro Norte</td> </tr> <tr> <td>La Toro</td> <td>5448-M-1960</td> <td>CIA GPL S.R.L.</td> <td>Granted</td> <td>30/04/2015</td> <td>6</td> </tr> <tr> <td>La Puntilla</td> <td>5448-M-1960</td> <td>CIA GPL S.R.L.</td> <td>Granted</td> <td>30/04/2015</td> <td>6</td> </tr> <tr> <td>Pique de Ortega</td> <td>5448-M-1960</td> <td>CIA GPL S.R.L.</td> <td>Granted</td> <td>30/04/2015</td> <td>6</td> </tr> <tr> <td>Descrubidora</td> <td>5448-M-1960</td> <td>CIA GPL S.R.L.</td> <td>Granted</td> <td>30/04/2015</td> <td>6</td> </tr> <tr> <td>Pardo</td> <td>5448-M-1960</td> <td>CIA GPL S.R.L.</td> <td>Granted</td> <td>30/04/2015</td> <td>6</td> </tr> <tr> <td>Sanchez</td> <td>5448-M-1960</td> <td>CIA GPL S.R.L.</td> <td>Granted</td> <td>30/04/2015</td> <td>6</td> </tr> <tr> <td>Andacollo</td> <td>5448-M-1960</td> <td>CIA GPL S.R.L.</td> <td>Granted</td> <td>30/04/2015</td> <td>6</td> </tr> </tbody> </table> <p><i>Mining Lease extensions (Demasias) at the Hualilan Project</i></p> <table border="1"> <thead> <tr> <th>Name</th> <th>Number</th> <th>Current Owner</th> <th>Status</th> <th>Grant date</th> <th>Area (ha)</th> </tr> </thead> <tbody> <tr> <td colspan="6">Cerro Sur</td> </tr> <tr> <td>North of "Pizarro" Mine</td> <td>195-152-C-1981</td> <td>Golden Mining S.R.L.</td> <td>Granted</td> <td>29/12/1981</td> <td>2.42</td> </tr> <tr> <td colspan="6">Cerro Norte</td> </tr> </tbody> </table>	Name	Number	Current Owner	Status	Grant Date	Area (ha)	Cerro Sur						Divisadero	5448-M-1960	Golden Mining S.R.L.	Granted	30/04/2015	6	Flor de Hualilan	5448-M-1960	Golden Mining S.R.L.	Granted	30/04/2015	6	Pereyra y Aciar	5448-M-1960	Golden Mining S.R.L.	Granted	30/04/2015	6	Bicolor	5448-M-1960	Golden Mining S.R.L.	Granted	30/04/2015	6	Sentazon	5448-M-1960	Golden Mining S.R.L.	Granted	30/04/2015	6	Muchilera	5448-M-1960	Golden Mining S.R.L.	Granted	30/04/2015	6	Magnata	5448-M-1960	Golden Mining S.R.L.	Granted	30/04/2015	6	Pizarro	5448-M-1960	Golden Mining S.R.L.	Granted	30/04/2015	6	Cerro Norte						La Toro	5448-M-1960	CIA GPL S.R.L.	Granted	30/04/2015	6	La Puntilla	5448-M-1960	CIA GPL S.R.L.	Granted	30/04/2015	6	Pique de Ortega	5448-M-1960	CIA GPL S.R.L.	Granted	30/04/2015	6	Descrubidora	5448-M-1960	CIA GPL S.R.L.	Granted	30/04/2015	6	Pardo	5448-M-1960	CIA GPL S.R.L.	Granted	30/04/2015	6	Sanchez	5448-M-1960	CIA GPL S.R.L.	Granted	30/04/2015	6	Andacollo	5448-M-1960	CIA GPL S.R.L.	Granted	30/04/2015	6	Name	Number	Current Owner	Status	Grant date	Area (ha)	Cerro Sur						North of "Pizarro" Mine	195-152-C-1981	Golden Mining S.R.L.	Granted	29/12/1981	2.42	Cerro Norte					
Name	Number	Current Owner	Status	Grant Date	Area (ha)																																																																																																																																	
Cerro Sur																																																																																																																																						
Divisadero	5448-M-1960	Golden Mining S.R.L.	Granted	30/04/2015	6																																																																																																																																	
Flor de Hualilan	5448-M-1960	Golden Mining S.R.L.	Granted	30/04/2015	6																																																																																																																																	
Pereyra y Aciar	5448-M-1960	Golden Mining S.R.L.	Granted	30/04/2015	6																																																																																																																																	
Bicolor	5448-M-1960	Golden Mining S.R.L.	Granted	30/04/2015	6																																																																																																																																	
Sentazon	5448-M-1960	Golden Mining S.R.L.	Granted	30/04/2015	6																																																																																																																																	
Muchilera	5448-M-1960	Golden Mining S.R.L.	Granted	30/04/2015	6																																																																																																																																	
Magnata	5448-M-1960	Golden Mining S.R.L.	Granted	30/04/2015	6																																																																																																																																	
Pizarro	5448-M-1960	Golden Mining S.R.L.	Granted	30/04/2015	6																																																																																																																																	
Cerro Norte																																																																																																																																						
La Toro	5448-M-1960	CIA GPL S.R.L.	Granted	30/04/2015	6																																																																																																																																	
La Puntilla	5448-M-1960	CIA GPL S.R.L.	Granted	30/04/2015	6																																																																																																																																	
Pique de Ortega	5448-M-1960	CIA GPL S.R.L.	Granted	30/04/2015	6																																																																																																																																	
Descrubidora	5448-M-1960	CIA GPL S.R.L.	Granted	30/04/2015	6																																																																																																																																	
Pardo	5448-M-1960	CIA GPL S.R.L.	Granted	30/04/2015	6																																																																																																																																	
Sanchez	5448-M-1960	CIA GPL S.R.L.	Granted	30/04/2015	6																																																																																																																																	
Andacollo	5448-M-1960	CIA GPL S.R.L.	Granted	30/04/2015	6																																																																																																																																	
Name	Number	Current Owner	Status	Grant date	Area (ha)																																																																																																																																	
Cerro Sur																																																																																																																																						
North of "Pizarro" Mine	195-152-C-1981	Golden Mining S.R.L.	Granted	29/12/1981	2.42																																																																																																																																	
Cerro Norte																																																																																																																																						

Challenger Gold Limited
ACN 123 591 382
ASX: **CEL**

Issued Capital
1,393.8m shares
126.7m options (\$0.14)
68.1m perf rights

Australian Registered Office
Level 1
100 Havelock Street
West Perth WA 6005

Directors
Mr Kris Knauer, MD and CEO
Mr Sergio Rotonado, Chairman
Dr Sonia Delgado, Exec. Director
Mr Fletcher Quinn, Non-Exec. Director
Mr Pini Althaus, Non Exec Director
Mr Brett Hackett Non Exec Director

Contact
T: +61 8 6385 2743
E: admin@challengergold.com

Criteria	JORC Code explanation	Commentary					
		South of "Andacollo" Mine	545.208-B-94	CIA GPL S.R.L.	Pending Reconsideration	14/02/1994	1.83
		South of "Sanchez" Mine	545.209-B-94	CIA GPL S.R.L.	Registered	14/02/1994	3.50
		South of "La Toro" Mine	195-152-C-1981	CIA GPL S.R.L.	Granted	29/12/1981	2.42
		South of "Pizarro" Mine	545.207-B-94	Golden Mining S.R.L.	Registered	14/02/1994	2.09
<i>Requested Mining Leases (Minas Solicitadas)</i>							
		Name	Number	Status	Area (ha)		
		Elena	1124.328-G-2021	Registered	2,799.24		
		Juan Cruz	1124.329-G-2021	Granted	933.69		
		Paula (over "Lo Que Vendra")	1124.454-G-2021	Application	1,460.06		
		Argelia	1124.486-G-2021	Registered	3,660.50		
		Ana Maria (over Ak2)	1124.287-G-2021	Registered	5,572.80		
		Erica (Over "El Peñón")	1124.541-G-2021	Application	6.00		
		Silvia Beatriz (over "AK3")	1124.572-G-2021	Application	2,290.75		
		Soldado Poltronieri (over 1124188-20, 545867-R-94 and 545880-O-94)	1124.108-2022	Application	777.56		
<i>Mining Lease Farmin Agreements</i>							
		Name	Number	Transferred to CEL	Status	Area (ha)	
		Marta Alicia	2260-S-58	In Process	Granted	23.54	
		Marta	339.154-R-92	In Process	Granted	478.50	
		Solitario 1-5	545.604-C-94	In Process	Application	685.00	
		Solitario 1-4	545.605-C-94	In Process	Registered	310.83	
		Solitario 1-1	545.608-C-94	In Process	Application	TBA	
		Solitario 6-1	545.788-C-94	In Process	Application	TBA	
		AGU 3	11240114-2014	No	Granted	1,500.00	
		AGU 5	1124.0343-2014	No	Granted	1,443.58	
		AGU 6	1124.0623-2017	No	Granted	1,500.00	
		AGU 7	1124.0622-S-17	No	Granted	1,500.00	
		Guillermina	1124.045-S-2019	No	Granted	2,921.05	
		El Petiso	1124.2478-71	No	Granted	18.00	
		Ayen/Josefina	1124.495-I-20	No	Granted	2059.6	

Challenger Gold Limited
ACN 123 591 382
ASX: **CEL**

Issued Capital
1,393.8m shares
126.7m options (\$0.14)
68.1m perf rights

Australian Registered Office
Level 1
100 Havelock Street
West Perth WA 6005

Directors
Mr Kris Knauer, MD and CEO
Mr Sergio Rotonado, Chairman
Dr Sonia Delgado, Exec. Director
Mr Fletcher Quinn, Non-Exec. Director
Mr Pini Althaus, Non Exec Director
Mr Brett Hackett Non Exec Director

Contact
T: +61 8 6385 2743
E: admin@challengergold.com

Criteria	JORC Code explanation	Commentary
----------	-----------------------	------------

Exploration Licence (Cateo) Farmin Agreements

Name	Number	Transferred to CEL	Status	Area (ha)
-	295.122-R-1989	In process	Registered	1,882.56
-	338.441-R-1993	In process	Granted	2,800.00
-	545.880-O-1994	In process	Registered	149.99
-	414.998-2005	Yes	Granted	721.90
-	1124.011-I-07	No	Granted	2552
-	1124.012-I-07	No	Registered	6677
-	1124.013-I-07	No	Granted	5818
-	1124.074-I-07	No	Granted	4484.5

Exploration Licence (Cateo) Held (Direct Award)

Name	Number	Transferred to CEL	Status	Area (ha)
-	1124-248G-20	Yes	Current	933.20
-	1124-188-G-20 (2 zones)	Yes	Current	327.16
-	1124.313-2021	Yes	Current	986.41
-	1124.564-G-2021	Yes	Current	1,521.12
-	1124.632-G-2022	Yes	Current	4,287.38

There are no known impediments to obtaining the exploration licenses or operating the Project.

Exploration done by other parties

- *Acknowledgment and appraisal of exploration by other parties.*

Intermittent historic sampling has produced a large volume of information and data including sampling, geological maps, reports, trenching data, underground surveys, drill hole results, geophysical surveys, non-JORC resource estimates plus property examinations and detailed studies by multiple geologists. Prior to exploration by CEL, no work has been completed on the Project since 2006.

There is at least 6 km of underground workings that pass through mineralised zones at Hualilan. Surveys of the workings are likely to be incomplete. Commonly incomplete records of the underground geology and sampling have been compiled and digitised as has sample data geological mapping adit exposures and drill hole results. Historic geophysical surveys exist but have been superseded by surveys completed by CEL.

Historic drilling on or near the Hualilan Project (Cerro Sur and Cerro Norte combined) extends to over 150 drill holes. The key historical exploration drilling and sampling programs are:

- 1984 – Lixivia SA channel sampling & 16 RC holes (AG1-AG16) totalling 2,040m
- 1995 - Plata Mining Limited (TSE: PMT) 33 RC holes (Hua- 1 to 33) + 1,500 RC chip samples
- 1998 – Chilean consulting firm EPROM (on behalf of Plata Mining) systematic underground mapping and channel sampling

Challenger Gold Limited
ACN 123 591 382
ASX: **CEL**

Issued Capital
1,393.8m shares
126.7m options (\$0.14)
68.1m perf rights

Australian Registered Office
Level 1
100 Havelock Street
West Perth WA 6005

Directors
Mr Kris Knauer, MD and CEO
Mr Sergio Rotonondo, Chairman
Dr Sonia Delgado, Exec. Director
Mr Fletcher Quinn, Non-Exec. Director
Mr Pini Althaus, Non Exec Director
Mr Brett Hackett Non Exec Director

Contact
T: +61 8 6385 2743
E: admin@challengergold.com

Criteria	JORC Code explanation	Commentary
		<ul style="list-style-type: none"> - 1999 – Compania Mineral El Colorado SA (“CMEC”) 59 diamond core holes (DDH-20 to 79) plus 1,700m RC program - 2003 – 2005 – La Mancha (TSE Listed) undertook 7,447m of DDH core drilling (HD-01 to HD-48) - Detailed resource estimation studies were undertaken by EPROM Ltd. (EPROM) in 1996 and CMEC (1999 revised 2000) both of which are well documented and La Mancha 2003 and 2006. <p>The collection of all exploration data by the various operators was of a high standard and appropriate sampling techniques intervals and custody procedures were used. Not all the historic data has been archived and so there are gaps in the availability of the historic data.</p>
Geology	- <i>Deposit type geological setting and style of mineralisation.</i>	<p>Mineralisation occurs in all rock types where it preferentially replaces limestone, shale and sandstone and occurs in fault zones and in fracture networks within dacitic intrusions.</p> <p>The mineralisation is Zn-(Pb-Cu-Ag) distal skarn (or manto-style skarn) overprinted with vein-hosted mesothermal to epithermal Au-Ag mineralisation. It has been divided into three phases – prograde skarn, retrograde skarn and a later quartz-rich mineralisation consistent with the evolution of a large hydrothermal system. Precise mineral paragenesis and hydrothermal evolution is the subject of on-going work which is being used for exploration and detailed geometallurgical test work.</p> <p>Gold occurs in native form as inclusions with sulphide (predominantly pyrite) and in pyroxene. The mineralisation commonly contains pyrite, chalcopyrite sphalerite and galena with rare arsenopyrite, pyrrhotite and magnetite.</p> <p>Mineralisation is either parallel to bedding in bedding-parallel faults, in veins or breccia matrix within fractured dacitic intrusions, at lithology contacts or in east-west striking steeply dipping siliceous faults that cross the bedding at a high angle. The faults have thicknesses of 1–4 metres and contain abundant sulphides. The intersection between the bedding-parallel mineralisation and east-striking cross veins seems to be important in localising the mineralisation.</p> <p>Complete oxidation of the surface rock due to weathering is thin. A partial oxidation / fracture oxidation layer near surface is 1 to 40m thick and has been modelled from drill hole intersections.</p>
Drill hole Information	<ul style="list-style-type: none"> - <i>A summary of all information material to the understanding of the exploration results including a tabulation of the following information for all Material drill holes:</i> - <i>easting and northing of the drill hole collar</i> - <i>elevation or RL (Reduced Level – elevation above sea level in metres) of the drill hole collar</i> 	<p>Significant intersections previous reported for historic drill holes, DD drill holes, RC drill holes completed by CEL are detailed in CEL ASX releases:</p> <p>1 June 2022 (Maiden MRE): https://announcements.asx.com.au/asxpdf/20220601/pdf/459jfk8g7x2mty.pdf and 29 March 2023 (MRE update): https://announcements.asx.com.au/asxpdf/20230329/pdf/45n49jlm02qrm1.pdf</p> <p>A cut-off grade of 1 g/t Au equivalent has been used with up to 2m of internal dilution or a cut-off grade of 0.2 g/t Au equivalent and up to 4m of internal dilution has been allowed. No metallurgical or recovery factors have been used in the intersections reported.</p>

Challenger Gold Limited
ACN 123 591 382
ASX: **CEL**

Issued Capital
1,393.8m shares
126.7m options (\$0.14)
68.1m perf rights

Australian Registered Office
Level 1
100 Havelock Street
West Perth WA 6005

Directors
Mr Kris Knauer, MD and CEO
Mr Sergio Rotondo, Chairman
Dr Sonia Delgado, Exec. Director
Mr Fletcher Quinn, Non-Exec. Director
Mr Pini Althaus, Non Exec Director
Mr Brett Hackett Non Exec Director

Contact
T: +61 8 6385 2743
E: admin@challengergold.com

Criteria	JORC Code explanation	Commentary
	<ul style="list-style-type: none"> - dip and azimuth of the hole - down hole length and interception depth - hole length. - If the exclusion of this information is justified on the basis that the information is not Material and this exclusion does not detract from the understanding of the report the Competent Person should clearly explain why this is the case. 	
Data aggregation methods	<ul style="list-style-type: none"> - In reporting Exploration Results weighting averaging techniques maximum and/or minimum grade truncations (eg cutting of high grades) and cut-off grades are usually Material and should be stated. - Where aggregate intercepts incorporate short lengths of high-grade results and longer lengths of low-grade results the procedure used for such aggregation should be stated and some typical examples of such aggregations should be shown in detail. - The assumptions used for any reporting of metal equivalent values should be clearly stated. 	<p>Weighted average significant intercepts are reported to a gold grade equivalent (AuEq). Results are reported to cut-off grade of a 1.0 g/t Au equivalent and 10 g/t Au equivalent allowing for up to 2m of internal dilution between samples above the cut-off grade and 0.2 g/t Au equivalent allowing up to 10m of internal dilution between samples above the cut-off grade. The following metals and metal prices have been used to report gold grade equivalent (AuEq): Au US\$ 1780 / oz Ag US\$24 /oz and Zn US\$ 2800 /t.</p> <p>Metallurgical recoveries for Au, Ag and Zn have been estimated from the results of interim metallurgical test work completed by SGS Metallurgical Operations in Lakefield, Ontario using a combination of gravity and flotation of a combined metallurgical sample from 5 drill holes. Using data from the interim test results, and for the purposes of the AuEq calculation for drill hole significant intercepts, gold recovery is estimated For the AuEq calculation average metallurgical recovery is estimated to be 94.9% for gold, 90.9% for silver, 67.0% for Zn and 57.8% for Pb. Metal prices used to report AuEq are Au US\$ 1900 / oz, Ag US\$24 /oz, Zn US\$ 4,000 /t and Pb US 2,000/t</p> <p>Accordingly, the formula used for Au Equivalent is: $AuEq (g/t) = Au (g/t) + [Ag (g/t) \times (24/1900) \times (0.909/0.949)] + [Zn (\%) \times (40.00 \times 31.1/1900) \times (0.670/0.949)] + (Pb (\%) \times 20.00 \times 31.1/1900) \times (0.578/0.9490)$.</p> <p>Metallurgical test work and geological and petrographic descriptions suggest all the elements included in the metal equivalents calculation have reasonable potential of eventual economic recovery. While Cu and Pb are reported in the table above as they were not yet considered economically significant at the time of the interim metallurgical test results, these metals were not used in the Au equivalent calculation at this early stage of the Project.</p> <p>No top cuts have been applied to the reported grades.</p>
Relationship between mineralisation	<ul style="list-style-type: none"> - These relationships are particularly important in the reporting of Exploration Results. 	<p>The mineralisation is moderately or steeply dipping and strikes NNE and ENE. For some drill holes, there is insufficient information to confidently establish the true width of the mineralized intersections at this stage of the exploration program.</p>

Challenger Gold Limited
ACN 123 591 382
ASX: **CEL**

Issued Capital
1,393.8m shares
126.7m options (\$0.14)
68.1m perf rights

Australian Registered Office
Level 1
100 Havelock Street
West Perth WA 6005

Directors
Mr Kris Knauer, MD and CEO
Mr Sergio Rotonondo, Chairman
Dr Sonia Delgado, Exec. Director
Mr Fletcher Quinn, Non-Exec. Director
Mr Pini Althaus, Non Exec Director
Mr Brett Hackett Non Exec Director

Contact
T: +61 8 6385 2743
E: admin@challengergold.com

Criteria	JORC Code explanation	Commentary
widths and intercept lengths	<ul style="list-style-type: none"> - <i>If the geometry of the mineralisation with respect to the drill hole angle is known its nature should be reported.</i> - <i>If it is not known and only the down hole lengths are reported there should be a clear statement to this effect (eg 'down hole length true width not known').</i> 	<p>Apparent widths may be thicker in the case where the dip of the mineralisation changes and/or bedding-parallel mineralisation intersects NW or ENE-striking cross faults and veins.</p> <p>Representative cross section interpretations have been provided periodically with releases of significant intersections to allow estimation of true widths from individual drill intercepts.</p>
Diagrams	<ul style="list-style-type: none"> - <i>Appropriate maps and sections (with scales) and tabulations of intercepts should be included for any significant discovery being reported These should include but not be limited to a plan view of drill hole collar locations and appropriate sectional views.</i> 	<p>Representative maps and sections are provided in the body of reports released to the ASX.</p>
Balanced reporting	<ul style="list-style-type: none"> - <i>Where comprehensive reporting of all Exploration Results is not practicable representative reporting of both low and high grades and/or widths should be practiced to avoid misleading reporting of Exploration Results.</i> 	<p>All available final data have been reported where possible.</p>
Other substantive exploration data	<ul style="list-style-type: none"> - <i>Other exploration data if meaningful and material should be reported including (but not limited to): geological observations; geophysical survey results; geochemical survey results; bulk samples – size and method of treatment; metallurgical test results; bulk density groundwater geotechnical and rock characteristics; potential deleterious or contaminating substances.</i> 	<p>Specific gravity measurements have been taken from the drill core recovered during the drilling program. These data are used to estimate densities in Resource Estimates.</p> <p>Eight Induced Polarisation (IP) lines have been completed in the northern areas of the Project. Stage 1 surveying was done on 1 kilometre length lines oriented 115° azimuth, spaced 100m apart with a 50m dipole. The initial results indicate possible extension of the mineralisation with depth. Stage 2 surveying was done across the entire field on 1 – 3 kilometre length lines oriented 090°, spaced 400m apart with a 50m dipole. On-going data interpretation is being done as drilling proceeds.</p> <p>Three ground magnetic surveys and a drone magnetic survey have been completed. The results of these data and subsequent geological interpretations are being used to guide future exploration.</p> <p>Metallurgical test results are used to estimate the AuEq (gold equivalent) as detailed above in <i>Data Aggregation</i> and below in <i>Section 3: Metallurgical Factors or Assumptions</i>.</p> <p>The formula used for AuEq is: $AuEq (g/t) = Au (g/t) + [Ag (g/t) \times (24/1900) \times (0.909/0.949)] + [Zn (\%) \times (40.00 \times 31.1/1900) \times (0.670/0.949)] + [Pb (\%) \times 20.00 \times 31.1/1900] \times (0.578/0.9490)$.</p> <p>Point resistivity surveys have been completed east of the Project for the purposes of detecting the presence of groundwater. Three surveys (total of 22 points) have been completed. A water bore has been drilled approximately 4 kilometres to the east of the Project which found water in permeable Quaternary sedimentary deposits above hard-rock basement at 128 metres vertical depth. Testing and</p>

Challenger Gold Limited
ACN 123 591 382
ASX: **CEL**

Issued Capital
1,393.8m shares
126.7m options (\$0.14)
68.1m perf rights

Australian Registered Office
Level 1
100 Havelock Street
West Perth WA 6005

Directors
Mr Kris Knauer, MD and CEO
Mr Sergio Rotonondo, Chairman
Dr Sonia Delgado, Exec. Director
Mr Fletcher Quinn, Non-Exec. Director
Mr Pini Althaus, Non Exec Director
Mr Brett Hackett Non Exec Director

Contact
T: +61 8 6385 2743
E: admin@challengergold.com

Criteria	JORC Code explanation	Commentary
		commissioning of the bore has yet to be completed. Further geophysical test work is planned to determine the extent of the aquifer.
Further work	<ul style="list-style-type: none"> - <i>The nature and scale of planned further work (eg tests for lateral extensions or depth extensions or large-scale step-out drilling).</i> - <i>Diagrams clearly highlighting the areas of possible extensions including the main geological interpretations and future drilling areas provided this information is not commercially sensitive.</i> 	<ul style="list-style-type: none"> • CEL Plans to undertake the following over the next 12 months <ul style="list-style-type: none"> • Additional resource extension, infill and exploration drilling; • Geophysical tests for undercover areas. • Structural interpretation and alteration mapping using high resolution satellite data and geophysics to better target extensions of known mineralisation. • Field mapping program targeting extensions of known mineralisation. • Further metallurgical test work.

Challenger Gold Limited
ACN 123 591 382
ASX: **CEL**

Issued Capital
1,393.8m shares
126.7m options (\$0.14)
68.1m perf rights

Australian Registered Office
Level 1
100 Havelock Street
West Perth WA 6005

Directors
Mr Kris Knauer, MD and CEO
Mr Sergio Rotondo, Chairman
Dr Sonia Delgado, Exec. Director
Mr Fletcher Quinn, Non-Exec. Director
Mr Pini Althaus, Non Exec Director
Mr Brett Hackett Non Exec Director

Contact
T: +61 8 6385 2743
E: admin@challengergold.com

Section 3 Estimation and Reporting of Mineral Resources

(Criteria listed in the preceding section also apply to this section.)

Criteria	JORC Code explanation	Commentary
Database integrity	<ul style="list-style-type: none"> - Measures taken to ensure that data has not been corrupted by for example transcription or keying errors between its initial collection and its use for Mineral Resource estimation purposes. - Data validation procedures used. 	<p>Geological logging completed by previous explorers was done on paper copies and transcribed into a series of excel spreadsheets. These data have been checked for errors. Checks have been made against the original logs and with follow-up twin and close spaced drilling. Only some of the historic drill holes have been used in the Resource Estimate, including the results presented in Section2. Some drill holes have been excluded where the geology indicates that the drill hole is likely mis-located or where the drill hole has been superseded by CEL drilling.</p> <p>For CEL drilled holes, assay data is received in digital format. Backup copies are backed up into a cloud-based file storage system and the data is entered into a drill hole database which is also securely backed up off site.</p> <p>The drill hole data is backed up and is updated periodically by the CEL GIS and data management team.</p>
Site visits	<ul style="list-style-type: none"> - Comment on any site visits undertaken by the Competent Person and the outcome of those visits. - If no site visits have been undertaken indicate why this is the case. 	<p>The Competent Person has undertaken site visits during exploration. Site visits were undertaken in 2019 and 2020 before COVID-19 closed international travel. Post COVID numerous site visits have undertaken since November 2021. The performance of the drilling program, collection of data, sampling procedures, sample submission and exploration program were initiated and reviewed during these visits.</p>
Geological interpretation	<ul style="list-style-type: none"> - Confidence in (or conversely the uncertainty of) the geological interpretation of the mineral deposit. - Nature of the data used and of any assumptions made. - The effect if any of alternative interpretations on Mineral Resource estimation. - The use of geology in guiding and controlling Mineral Resource estimation. - The factors affecting continuity both of grade and geology. 	<p>The geological interpretation is considered appropriate given the drill core density of data that has been collected, access to mineralisation at surface and underground exposures. Given the data, geological studies past and completed by CEL, the Competent Person has a high level of confidence in the geological model that has been used to constrain the mineralised domains. It is assumed that networks of fractures controlled by local geological factors have focussed hydrothermal fluids and been the site of mineralisation in both the prograde zinc skarn and retrograde mesothermal – epithermal stages of hydrothermal evolution.</p> <p>The interpretation captures the essential geometry of the mineralised structure and lithologies with drill data supporting the findings from the initial underground sampling activities. Mineralised domains have been built using explicit wireframe techniques from 0.2 – 0.5 g/t AuEq mineralised intersections, joined between holes by the instruction from the geology and structure. Continuity of grade between drill holes is determined by the intensity of fracturing, the host rock contacts (particularly dacite – limestone contacts) and by bedding parallel faults, particularly within limestone, at the limestone and overlying sedimentary rock contact and within the lower sequences of the sedimentary rocks within 40m of the contact.</p> <p>No alternative interpretations have been made from which a Mineral Resource Estimate has been made.</p>
Dimensions	<ul style="list-style-type: none"> - The extent and variability of the Mineral Resource expressed as length (along strike or otherwise) plan width and depth below surface to the upper and lower limits of the Mineral 	<p>31 separate domains were interpreted over a strike length of 2.3kms. The domains vary in width and orientation from 2m up to 100m in width. The deepest interpreted domain extends from the surface down approximately 600m below surface.</p>

Challenger Gold Limited
ACN 123 591 382
ASX: **CEL**

Issued Capital
1,393.8m shares
126.7m options (\$0.14)
68.1m perf rights

Australian Registered Office
Level 1
100 Havelock Street
West Perth WA 6005

Directors
Mr Kris Knauer, MD and CEO
Mr Sergio Rotondo, Chairman
Dr Sonia Delgado, Exec. Director
Mr Fletcher Quinn, Non-Exec. Director
Mr Pini Althaus, Non Exec Director
Mr Brett Hackett Non Exec Director

Contact
T: +61 8 6385 2743
E: admin@challengergold.com

Criteria	JORC Code explanation	Commentary																				
	<i>Resource.</i>																					
Estimation and modelling techniques	<ul style="list-style-type: none"> - <i>The nature and appropriateness of the estimation technique(s) applied and key assumptions including treatment of extreme grade values domaining interpolation parameters and maximum distance of extrapolation from data points. If a computer assisted estimation method was chosen include a description of computer software and parameters used.</i> - <i>The availability of check estimates previous estimates and/or mine production records and whether the Mineral Resource estimate takes appropriate account of such data.</i> - <i>The assumptions made regarding recovery of by-products.</i> - <i>Estimation of deleterious elements or other non-grade variables of economic significance (eg sulphur for acid mine drainage characterisation).</i> - <i>In the case of block model interpolation the block size in relation to the average sample spacing and the search employed.</i> - <i>Any assumptions behind modelling of selective mining units.</i> - <i>Any assumptions about correlation between variables.</i> - <i>Description of how the geological interpretation was used to control the resource estimates.</i> - <i>Discussion of basis for using or not using grade cutting or capping.</i> - <i>The process of validation the checking process used the comparison of model data to drill hole data and use of reconciliation data if available</i> 	<p>Estimation was made for Au Ag, Zn and Pb being the elements of economic interest. Estimate was also made for Fe and S being the elements that for pyrite which is of economic and metallurgical interest and is also used to estimate the density for bocks in the Mineral Resource Estimate.</p> <p>No previous JORC Resource estimates or non-JORC Foreign Resource estimates were made with similar methods to compare to the current Resource estimate. No production records are available to provide comparisons.</p> <p>A 2m composite length was selected after reviewing the original sample lengths from the drilling which showed an average length of 1.54m for samples taken within the mineralised domains.</p> <p>A statistical analysis was undertaken on the sample composites top cuts for Au, Ag, Zn and Pb composites on a domain-by-domain basis. The domains were then grouped by host rock and mineralisation style and group domain top cuts were applied in order to reduce the influence of extreme values on the resource estimates without downgrading the high-grade composites too severely. The top-cut values were chosen by assessing the high-end distribution of the grade population within each group and selecting the value above which the distribution became erratic. The following table shows the top cuts applied to each group and domain for Au, Ag, Zn and Pb. No top cut was applied to estimation of Fe and S.</p> <table border="1"> <thead> <tr> <th>Group</th> <th>Au (ppm)</th> <th>Ag (ppm)</th> <th>Zn (%)</th> <th>Pb (%)</th> </tr> </thead> <tbody> <tr> <td>Fault Zone hosted (Magnata and Sanchez) and CAL (limestone) hosted</td> <td>80</td> <td>300</td> <td>20</td> <td>5</td> </tr> <tr> <td>LUT (siltstone) hosted</td> <td>20</td> <td>100</td> <td>5</td> <td>1</td> </tr> <tr> <td>DAC (intrusive) hosted</td> <td>15</td> <td>70</td> <td>5</td> <td>1.8</td> </tr> </tbody> </table> <p>Block modelling was undertaken in Surpac™ V6.6 software.</p> <p>A block model was set up with a parent cell size of 10m (E) x 20m (N) x 10m (RL) with standard sub-celling to 2.5m (E) x 5.0m (N) x 2.5m (RL) to maintain the resolution of the mineralised domains. The 20m Y and vertical block dimensions were chosen to reflect drill hole spacing and to provide definition for potential mine planning. The shorter 10m X dimension was used to reflect the geometry and orientation of the majority of the domain wireframes.</p> <p>Group Variography was carried out using Leapfrog Edge software on the two metre composited data from each of the 31 domains for each variable.</p>	Group	Au (ppm)	Ag (ppm)	Zn (%)	Pb (%)	Fault Zone hosted (Magnata and Sanchez) and CAL (limestone) hosted	80	300	20	5	LUT (siltstone) hosted	20	100	5	1	DAC (intrusive) hosted	15	70	5	1.8
Group	Au (ppm)	Ag (ppm)	Zn (%)	Pb (%)																		
Fault Zone hosted (Magnata and Sanchez) and CAL (limestone) hosted	80	300	20	5																		
LUT (siltstone) hosted	20	100	5	1																		
DAC (intrusive) hosted	15	70	5	1.8																		

Challenger Gold Limited
ACN 123 591 382
ASX: **CEL**

Issued Capital
1,393.8m shares
126.7m options (\$0.14)
68.1m perf rights

Australian Registered Office
Level 1
100 Havelock Street
West Perth WA 6005

Directors
Mr Kris Knauer, MD and CEO
Mr Sergio Rotonondo, Chairman
Dr Sonia Delgado, Exec. Director
Mr Fletcher Quinn, Non-Exec. Director
Mr Pini Althaus, Non Exec Director
Mr Brett Hackett Non Exec Director

Contact
T: +61 8 6385 2743
E: admin@challengergold.com

Criteria	JORC Code explanation	Commentary
		<p>All relevant variables; Au, Ag, Pb, Zn, Fe and S in each domain were estimated using Ordinary Kriging using only data from within that domain. The orientation of the search ellipse and variogram model was controlled using surfaces designed to reflect the local orientation of the mineralized structures.</p> <p>An oriented “ellipsoid” search for each domain was used to select data for interpolation. A 3 pass estimation search was conducted, with expanding search ellipsoid dimensions and decreasing minimum number of samples with each successive pass. First passes were conducted with ellipsoid radii corresponding to 40% of the complete range of variogram structures for the variable being estimated. Pass 2 was conducted with 60% of the complete range of variogram structures for the variable being estimated. Pass 3 was conducted with dimensions corresponding to 200% of the semi-variogram model ranges. Blocks within the model where Au was not estimated during the first 3 passes were assigned as unclassified. Blocks for Ag, Pb, Zn, Fe and S that were not estimated were assigned the average values on a per-domain basis.</p> <p>Validation checks included statistical comparison between drill sample grades and Ordinary Kriging block estimate results for each domain. Visual validation of grade trends for each element along the drill sections was also completed in addition to swath plots comparing drill sample grades and model grades for northings, eastings and elevation. These checks show good correlation between estimated block grades and drill sample grades.</p>
Moisture	- Whether the tonnages are estimated on a dry basis or with natural moisture and the method of determination of the moisture content.	Tonnage is estimated on a dry basis.
Cut-off parameters	- The basis of the adopted cut-off grade(s) or quality parameters applied.	<p>The following metals and metal prices have been used to report gold grade equivalent (AuEq): Au US\$ 1900 / oz, Ag US\$24 /oz, Zn US\$ 4,000 /t and Pb US 2,000/t.</p> <p>Average metallurgical recoveries for Au, Ag, Zn and Pb have been estimated from the results of Stage 1 metallurgical test work completed by SGS Metallurgical Operations in Lakefield, Ontario using a combination of gravity and flotation combined metallurgical samples as detailed in the Criteria below.</p> <p>For the AuEq calculation average metallurgical recovery is estimated as 94.9% for gold, 90.9% for silver, 67.0% for Zn and 57.8% for Pb.</p> <p>Accordingly, the formula used for Au Equivalent is: $AuEq (g/t) = Au (g/t) + [Ag (g/t) \times (24/1900) \times (0.909/0.949)] + [Zn (\%) \times (40.00 \times 31.1/1900) \times (0.670/0.949)] + (Pb (\%) \times 20.00 \times 31.1/1900) \times (0.578/.9490)$.</p> <p>Based on the break-even grade for an optimised pit shell for gold equivalent, a AuEq cut-off grade of 0.30 ppm is used to report the resource within an optimised pit shell run at a gold price of US\$1,800 per ounce and allowing for Ag, Zn and Pb credits. Under this scenario, blocks with a grade above the 0.30 g/t Au Eq cut off are considered to have reasonable prospects of mining by open pit methods.</p> <p>A AuEq cut-off grade of 1.0 ppm was used to report the resource beneath the optimised pit shell run as these blocks are considered to have reasonable prospects of future mining by underground methods.</p>

Challenger Gold Limited
ACN 123 591 382
ASX: **CEL**

Issued Capital
1,393.8m shares
126.7m options (\$0.14)
68.1m perf rights

Australian Registered Office
Level 1
100 Havelock Street
West Perth WA 6005

Directors
Mr Kris Knauer, MD and CEO
Mr Sergio Rotonondo, Chairman
Dr Sonia Delgado, Exec. Director
Mr Fletcher Quinn, Non-Exec. Director
Mr Pini Althaus, Non Exec Director
Mr Brett Hackett Non Exec Director

Contact
T: +61 8 6385 2743
E: admin@challengergold.com

Criteria	JORC Code explanation	Commentary
Mining factors or assumptions	<p>- Assumptions made regarding possible mining methods minimum mining dimensions and internal (or if applicable external) mining dilution. It is always necessary as part of the process of determining reasonable prospects for eventual economic extraction to consider potential mining methods but the assumptions made regarding mining methods and parameters when estimating Mineral Resources may not always be rigorous. Where this is the case this should be reported with an explanation of the basis of the mining assumptions made.</p>	<p>The Resource estimate has assumed that near surface mineralisation would be amenable to open pit mining given that the mineralisation is exposed at surface and under relatively thin unconsolidated cover. A surface mine optimiser has been used to determine the proportion of the Resource estimate model that would be amenable to eventual economic extraction by open pit mining methods. The surface mine optimiser was built using the following parameters with prices in USD:</p> <ul style="list-style-type: none"> - Au price of \$1,800 per oz, Ag price of \$23.4 per oz, Zn price of \$3,825 per tonne and Pb price of \$1,980 per tonne - Average metallurgical recoveries of 94.9% for Au, 90.9 % for Ag and 67 % for Zn and 57.8 % for Pb. - Ore and waste mining cost of \$2.00 per tonne - Unconsolidated cover removal cost of \$0.10 per tonne - Processing cost of \$10.00 per tonne - Transport and marketing of \$50 / oz of AuEq (road to Jan Juan then rail to Rosario Port) - Royalty of \$60 per oz Au, 3% for Ag, Zn and Pb. - Assumed concentrate payability of 94.1% for Au, 82.9% for Ag, 90 % for Zn and 95 % for Pb. - 45° pit slopes on the western side of the pit and 55° on the eastern side of the pit <p>Blocks above a 0.30 g/t AuEq within the optimised open pit shell are determined to have reasonable prospects of future economic extraction by open pit mining and are included in the Resource estimate on that basis. Blocks below the open pit shell that are above 1.0 g/t AuEq are determined to have reasonable prospects of future economic extraction by underground mining methods and are included in the Resource estimate on that basis.</p>
Metallurgical factors or assumptions	<p>- The basis for assumptions or predictions regarding metallurgical amenability. It is always necessary as part of the process of determining reasonable prospects for eventual economic extraction to consider potential metallurgical methods but the assumptions regarding metallurgical treatment processes and parameters made when reporting Mineral Resources may not always be rigorous. Where this is the case this should be reported with an explanation of the basis of the metallurgical assumptions made.</p>	<p>CEL has completed Stage 1 metallurgical test work on representative composite sample of mineralisation from:</p> <ol style="list-style-type: none"> 1. Two separate composite samples of limestone-hosted massive sulphide (manto) Sample A has a weighted average grade of 10.4 g/t Au, 31.7 g/t Ag, 3.2 % Zn and 0.46 % Pb. Sample B has a weighted average grade of 9.7 g/t Au, 41.6 g/t Ag, 4.0% Zn and 0.48% Pb. 2. One dacite (intrusive) composite sample with a weighted average grade of 1.1 g/t Au, 8.1 g/t Ag and 0.10 % Zn and 0.04% Pb. 3. One sediment hosted (fine grained sandstone and siltstone) composite sample with a weighted average grade of 0.68 g/t Au, 7.5 g/t Ag, 0.34 % Zn and 0.06 % Pb. 4. One oxidised limestone (manto oxide) composite sample with a weighted average grade of 7.0 g/t Au, 45 g/t Ag, 3.7% Zn and 0.77% Pb. <p>Gravity recovery and sequential flotation tests of the higher-grade limestone hosted mineralisation involved;</p> <ol style="list-style-type: none"> 1. primary P80 = 51 micron primary grind, 2. gravity recovery, 3. Pb-Cu followed by Zn rougher flotation,

Challenger Gold Limited
ACN 123 591 382
ASX: **CEL**

Issued Capital
1,393.8m shares
126.7m options (\$0.14)
68.1m perf rights

Australian Registered Office
Level 1
100 Havelock Street
West Perth WA 6005

Directors
Mr Kris Knauer, MD and CEO
Mr Sergio Rotonondo, Chairman
Dr Sonia Delgado, Exec. Director
Mr Fletcher Quinn, Non-Exec. Director
Mr Pini Althaus, Non Exec Director
Mr Brett Hackett Non Exec Director

Contact
T: +61 8 6385 2743
E: admin@challengergold.com

Criteria	JORC Code explanation	Commentary
		<p>4. p80 = 29 micron regrind of the Zn rougher concentrate, 5. two re-cleaning stages of the Pb/Cu rougher concentrate, 6. four re-cleaning Sages on the Zn rougher concentrate, and 7. additional gravity recovery stages added to the Zn Rougher concentrate</p> <p>This results in the following products that are likely to be saleable</p> <ul style="list-style-type: none"> - Au-Ag concentrate (118 g/t Au, 286 g/t Ag) with low deleterious elements, - Pb concentrate (65% Pb, 178 g/t Au, 765 g/t Ag) with low deleterious elements, and - Zn concentrate (51% Zn, 10 g/t Au, 178 g/t Ag) with low deleterious elements, relatively high Cd, but at a level that is unlikely to attract penalties. - tailing grades of 2 to 3 g/t Au which respond to intensive cyanide leach with recoveries of 70-80% of any residual gold and silver to a gold doré bar. <p>Two intensive leach tests of Au-Ag concentrate to doré have been completed using a representative sample of the Au-Ag concentrate. One split of the sample was finely ground to p80 of 16.7 µm and the second split finely ground to p80 of 40 µm. The 16.7 µm sample returned a recovery of 96.0% Au and the 40 µm sample returned a recovery of 92.8% Au. These results provide an option to eliminate concentrate transport costs and increase payability for the Au-Ag concentrate.</p> <p>Gravity recovery and flotation tests of the intrusive-hosted mineralisation involved;</p> <ol style="list-style-type: none"> 1. primary P80 = 120-80 micron primary grind, 2. gravity recovery, 3. single stage rougher sulphide flotation, 4. P80 = 20-30 micron regrind of the rougher concentrate (5-10% mass), 5. one or two re-cleaning stages of the Au-Ag Rougher concentrate <p>At primary grind of p80 = 76 micron and regrind of p80 = 51 micron an Au-Ag concentrate can be produced grading 54 g/t Au and 284 g/t Ag with total recoveries of 97% (Au) and 85% (Ag).</p> <p>One test of a sediment hosted composite sample (5-10% of the mineralisation at the Project) was a repeat of the testing done on the intrusive-hosted mineralisation. This produced an Au-Ag concentrate grading 23.6 g/t Au and 234 g/t Ag at total recoveries of 85% (Au) and 87% (Ag). Further test work is likely to be done as part of more detailed studies. It is likely that the concentrate produced from the sediment-hosted mineralisation will be combined with the Au-Ag concentrate from the limestone and intrusive-hosted mineralisation.</p> <p>Applying recoveries of 70% for both gold and silver to the various concentrate tailings components where leaching is likely to be undertaken during production generates recoveries of:</p> <ul style="list-style-type: none"> ▪ 95% (Au), 93% (Ag), 89% (Zn), 70% (Pb) from the high-grade skarn (manto) component of the mineralisation;

Challenger Gold Limited
ACN 123 591 382
ASX: **CEL**

Issued Capital
1,393.8m shares
126.7m options (\$0.14)
68.1m perf rights

Australian Registered Office
Level 1
100 Havelock Street
West Perth WA 6005

Directors
Mr Kris Knauer, MD and CEO
Mr Sergio Rotonondo, Chairman
Dr Sonia Delgado, Exec. Director
Mr Fletcher Quinn, Non-Exec. Director
Mr Pini Althaus, Non Exec Director
Mr Brett Hackett Non Exec Director

Contact
T: +61 8 6385 2743
E: admin@challengergold.com

Criteria	JORC Code explanation	Commentary
		<ul style="list-style-type: none"> ▪ 96% (Au) and 88% (Ag) from the intrusion-hosted component of the mineralisation; ▪ 85% (Au) and 87% (Ag) from the sediment-hosted component of the mineralisation; <p>An intensive cyanide leach test of oxide (limestone and dacite hosted mineralisation) has produced recoveries of 78% (Au) and 64% (Ag) which is expected to be recovered into gold doré bar. While the oxide component of the mineralisation comprises only a small percentage of the Hualilan mineralisation it lies in the top 30-40 metres and would be mined early in the case of an open pit operation.</p> <p>Based on the test work to date and the proportions of the various mineralisation types in the current geological model, it is expected that overall average recoveries for potentially saleable metals will be:</p> <ul style="list-style-type: none"> - 94.9% Au, - 90.9% for Ag - 67.0% for Zn and - 57.8% for Pb <p>As further results are obtained, these assumptions will be updated.</p> <p>Additional Stage 2 work involving column testing of low-grade material, improved recovery of Zn in lower-grade mineralisation, comminution and variability testing, blended test work, and pilot plant testing is ongoing and planned.</p>
Environmental factors or assumptions	<p>- Assumptions made regarding possible waste and process residue disposal options. It is always necessary as part of the process of determining reasonable prospects for eventual economic extraction to consider the potential environmental impacts of the mining and processing operation. While at this stage the determination of potential environmental impacts particularly for a greenfields project may not always be well advanced the status of early consideration of these potential environmental impacts should be reported. Where these aspects have not been considered this should be reported with an explanation of the environmental assumptions made.</p>	<p>It is considered that there are no significant environmental factors which would prevent the eventual extraction of gold from the project. Environmental surveys and assessments have been completed in the past and will form a part of future pre-feasibility studies.</p>
Bulk density	<p>- Whether assumed or determined. If assumed the basis for the assumptions. If determined</p>	<p>CEL has collected specific gravity (SG) measurements from drill core, which have been used to estimate block densities for the Resource estimate.</p>

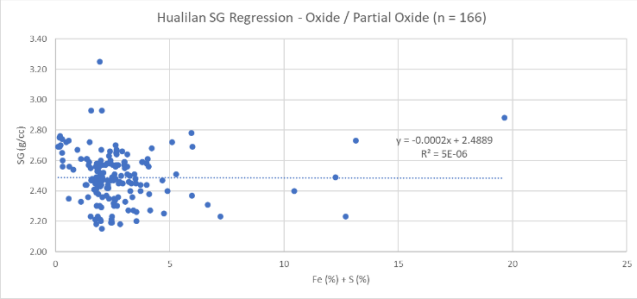
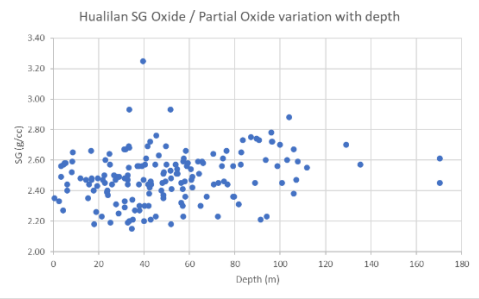
Challenger Gold Limited
ACN 123 591 382
ASX: **CEL**

Issued Capital
1,393.8m shares
126.7m options (\$0.14)
68.1m perf rights

Australian Registered Office
Level 1
100 Havelock Street
West Perth WA 6005

Directors
Mr Kris Knauer, MD and CEO
Mr Sergio Rotondo, Chairman
Dr Sonia Delgado, Exec. Director
Mr Fletcher Quinn, Non-Exec. Director
Mr Pini Althaus, Non Exec Director
Mr Brett Hackett Non Exec Director

Contact
T: +61 8 6385 2743
E: admin@challengergold.com

Criteria	JORC Code explanation	Commentary
	<p><i>the method used whether wet or dry the frequency of the measurements the nature size and representativeness of the samples.</i></p> <ul style="list-style-type: none"> - <i>The bulk density for bulk material must have been measured by methods that adequately account for void spaces (vugs porosity etc) moisture and differences between rock and alteration zones within the deposit.</i> - <i>Discuss assumptions for bulk density estimates used in the evaluation process of the different materials.</i> 	<p>Within the mineralised domains there are 956 SG measurements made on drill core samples of 0.1 – 0.2 metres length. Measurements were determined on a dry basis by measuring the difference in sample weight in water and weight in air. For porous samples, the weight in water was measured after wrapping the sample so that no water enters the void space during weighing.</p> <p>In oxidised and partially oxidised rocks, SG clusters around an average of 2.49 g/cc (2,490 kg/m³) which is independent of depth. A density of 2,490 kg/m³ has been used for oxidised, fracture oxidised and partially oxidised blocks.</p> <div style="display: flex; justify-content: space-around;">   </div> <p>In fresh rock samples, a regression model for block density determination has been made by plotting assay interval Fe (%) + S (%) from the interval where the SG measurement was made against the SG measurement. Fe and S are the two elements that form pyrite which is the mineral that is commonly associated with gold and base metal mineralisation at Hualilan. SG plotted against (Fe+S) follows a linear trend within the mineralised domains for oxide and fresh rock as shown below.</p>

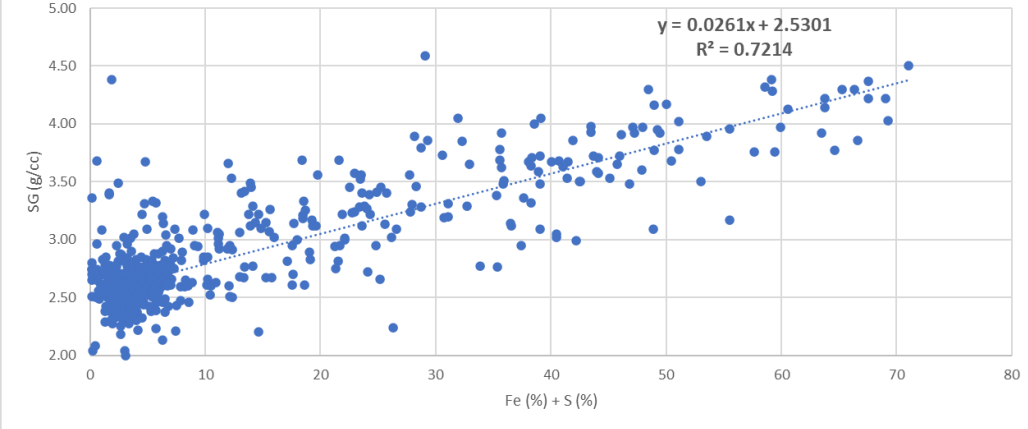
Challenger Gold Limited
ACN 123 591 382
ASX: **CEL**

Issued Capital
1,393.8m shares
126.7m options (\$0.14)
68.1m perf rights

Australian Registered Office
Level 1
100 Havelock Street
West Perth WA 6005

Directors
Mr Kris Knauer, MD and CEO
Mr Sergio Rotondo, Chairman
Dr Sonia Delgado, Exec. Director
Mr Fletcher Quinn, Non-Exec. Director
Mr Pini Althaus, Non Exec Director
Mr Brett Hackett Non Exec Director

Contact
T: +61 8 6385 2743
E: admin@challengergold.com

Criteria	JORC Code explanation	Commentary
		<p style="text-align: center;">Hualilan SG Regression - Oxide / Partial Oxide (n = 790)</p>  <p>For fresh rock at zero Fe + S (%) the density is assumed to be 2,530 kg/m³ (2.52 g/cc). The regression slope has a linear increase in density of 26.1 kg/m³ (0.0261 g/cc) for each 1 percent increase in Fe + S (%). The formula used for block density (kg/m³) determination in oxide rock is 2,530 + 26.1 x (Fe % + S%).</p>
<p>Classification</p>	<ul style="list-style-type: none"> - The basis for the classification of the Mineral Resources into varying confidence categories. - Whether appropriate account has been taken of all relevant factors (ie relative confidence in tonnage/grade estimations reliability of input data confidence in continuity of geology and metal values quality quantity and distribution of the data). - Whether the result appropriately reflects the Competent Person's view of the deposit. 	<p>The Mineral Resource has been classified based on the guidelines specified in the JORC Code. As a guide to reasonable prospects for economic extraction, the classification level is based upon semi-qualitative assessment of the geological understanding of the deposit, geological and mineralisation continuity, drill hole spacing, QC results, search and interpolation parameters, analysis of available density information and possible mining methods. The estimation search strategy was undertaken in three separate passes with different search distances, and the minimum number of samples used to estimate a block which were then used as a guide for the classification of the resource into Indicated, Inferred and Unclassified. The classification was then further modified to restrict the Indicated Resource to the domains with closer spaced drilling. The potential open pit resource was constrained within an optimised pit shell run using a gold price of US\$1,800 per ounce. Resources reported inside the pit shell were reported above a AuEq cut-off grade of 0.3 g/t and Resources outside the pit shell were reported above a AuEq cut-off grade of 1.0 g/t. Scoping study results have indicated that underground mining and open pit mining are both possible allowing for classification of Indicated and Inferred Mineral Resources throughout the estimation. The Competent Person has reviewed the result and determined that these classifications are appropriate given the confidence in the geology, data, results from drilling and possible mining methods as detailed in the scoping study.</p>
<p>Audits or reviews</p>	<ul style="list-style-type: none"> - The results of any audits or reviews of Mineral Resource estimates. 	<p>The Mineral Resource estimate has not been independently audited or reviewed.</p>

Challenger Gold Limited
ACN 123 591 382
ASX: **CEL**

Issued Capital
1,393.8m shares
126.7m options (\$0.14)
68.1m perf rights

Australian Registered Office
Level 1
100 Havelock Street
West Perth WA 6005

Directors
Mr Kris Knauer, MD and CEO
Mr Sergio Rotonado, Chairman
Dr Sonia Delgado, Exec. Director
Mr Fletcher Quinn, Non-Exec. Director
Mr Pini Althaus, Non Exec Director
Mr Brett Hackett Non Exec Director

Contact
T: +61 8 6385 2743
E: admin@challengergold.com

Criteria	JORC Code explanation	Commentary
Discussion of relative accuracy/confidence	<ul style="list-style-type: none"> - Where appropriate a statement of the relative accuracy and confidence level in the Mineral Resource estimate using an approach or procedure deemed appropriate by the Competent Person. For example the application of statistical or geostatistical procedures to quantify the relative accuracy of the resource within stated confidence limits or if such an approach is not deemed appropriate a qualitative discussion of the factors that could affect the relative accuracy and confidence of the estimate. - The statement should specify whether it relates to global or local estimates and if local state the relevant tonnages which should be relevant to technical and economic evaluation. Documentation should include assumptions made and the procedures used. - These statements of relative accuracy and confidence of the estimate should be compared with production data where available. 	<p>There is sufficient confidence in the data quality drilling methods and analytical results that they can be relied upon. The available geology and assay data correlate well. The approach and procedure is deemed appropriate given the confidence limits. The main factors which could affect relative accuracy are:</p> <ul style="list-style-type: none"> - domain boundary assumptions - orientation - grade continuity - top cut. <p>Grade continuity is variable in nature in this style of deposit and has not been demonstrated to date and closer spaced drilling is required to improve the understanding of the grade continuity in both strike and dip directions. It is noted that the results from the twinning of three holes by La Mancha are encouraging in terms of grade repeatability.</p> <p>The deposit contains very high grades and there is need for the use of top cuts.</p> <p>No production data is available for comparison.</p>

Challenger Gold Limited
ACN 123 591 382
ASX: **CEL**

Issued Capital
1,393.8m shares
126.7m options (\$0.14)
68.1m perf rights

Australian Registered Office
Level 1
100 Havelock Street
West Perth WA 6005

Directors
Mr Kris Knauer, MD and CEO
Mr Sergio Rotondo, Chairman
Dr Sonia Delgado, Exec. Director
Mr Fletcher Quinn, Non-Exec. Director
Mr Pini Althaus, Non Exec Director
Mr Brett Hackett Non Exec Director

Contact
T: +61 8 6385 2743
E: admin@challengergold.com